

ANEXOS III, IV e V



centro
de
documentação

RE(Arq)
12.A

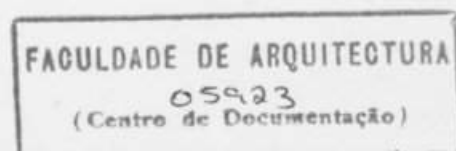
UNIVERSIDADE TÉCNICA DE LISBOA

Faculdade de Arquitectura de Lisboa

Anexos III e IV

6º Ano

1998



ANEXO III
Trabalho realizado por **CARLA ROSADO**

TRABALHOS REALIZADOS NA C.M.L. DURANTE 1997 E 1998 (até Junho)

ANEXO III

ESPAÇOS EXTERIORES

TRABALHOS REALIZADOS NA C.M.L. DURANTE 1997 E 1998 (até Junho)



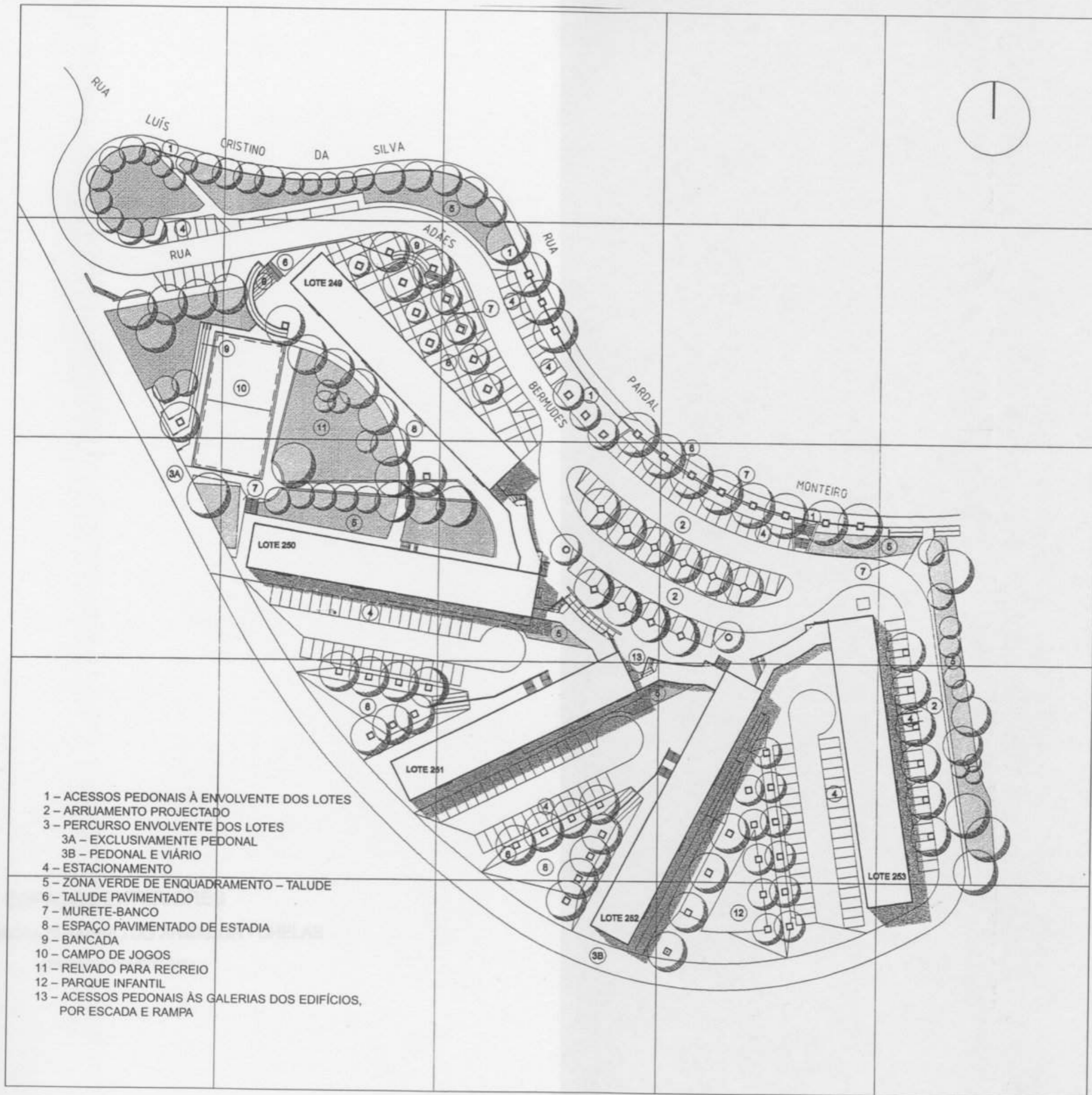
ESPAÇOS EXTERIORES
PROPOSTA PARA O BAIRRO DOS LOIOS - CHELAS



VISTA DO EXISTENTE



LOCALIZAÇÃO

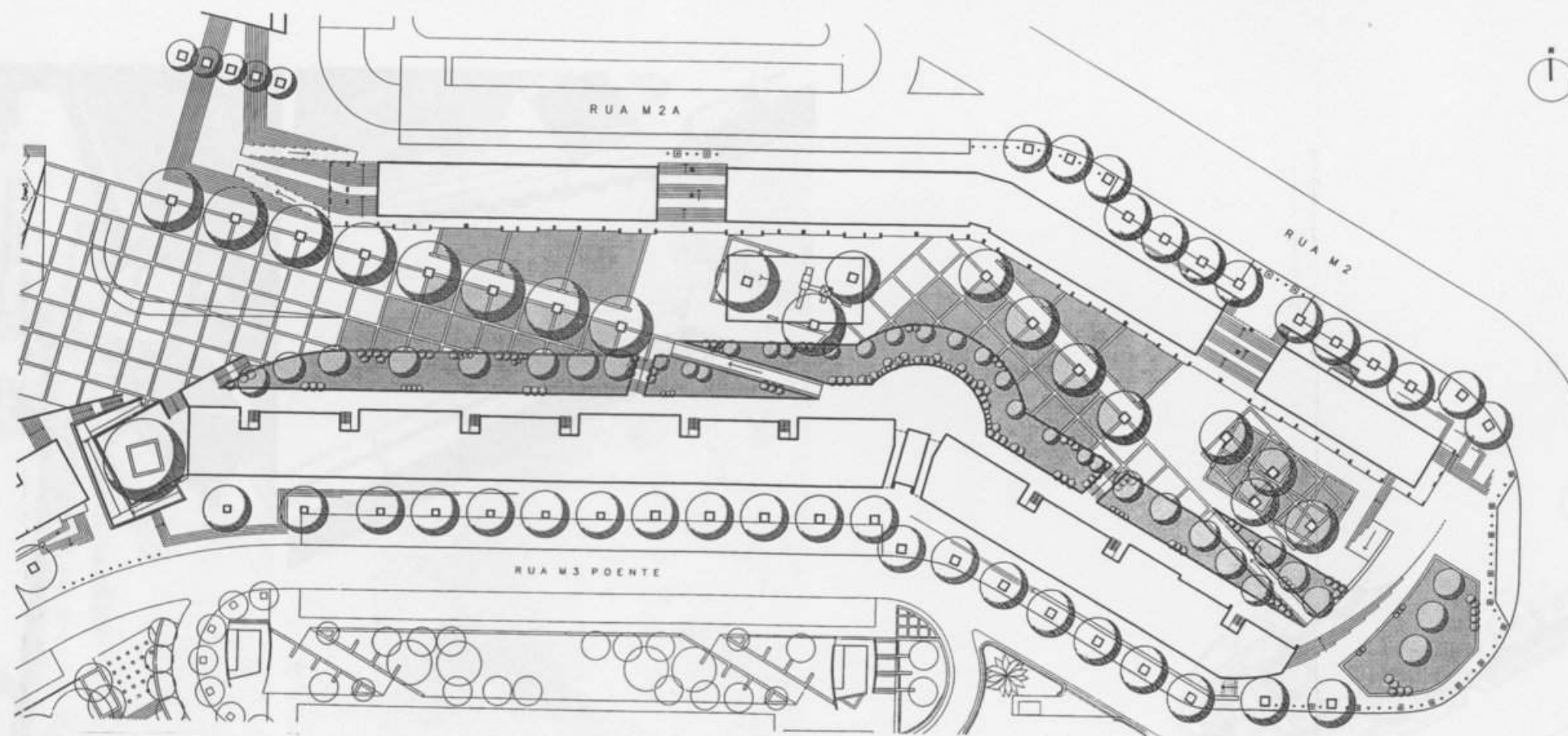


- 1 - ACESSOS PEDONAIS À ENVOLVENTE DOS LOTES
- 2 - ARRUAMENTO PROJECTADO
- 3 - PERCURSO ENVOLVENTE DOS LOTES
 - 3A - EXCLUSIVAMENTE PEDONAL
 - 3B - PEDONAL E VIÁRIO
- 4 - ESTACIONAMENTO
- 5 - ZONA VERDE DE ENQUADRAMENTO - TALUDE
- 6 - TALUDE PAVIMENTADO
- 7 - MURETE-BANCO
- 8 - ESPAÇO PAVIMENTADO DE ESTADIA
- 9 - BANCADA
- 10 - CAMPO DE JOGOS
- 11 - RELVADO PARA RECREIO
- 12 - PARQUE INFANTIL
- 13 - ACESSOS PEDONAIS ÀS GALERIAS DOS EDIFÍCIOS, POR ESCADA E RAMPAS

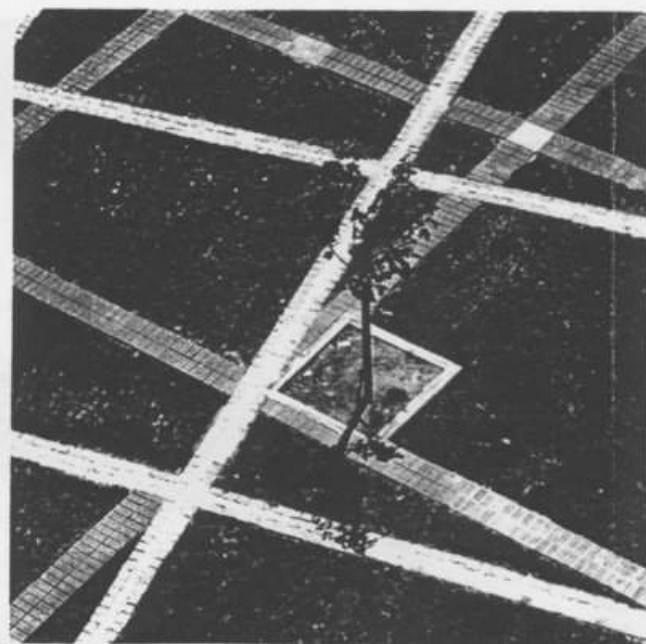
PLANO GERAL



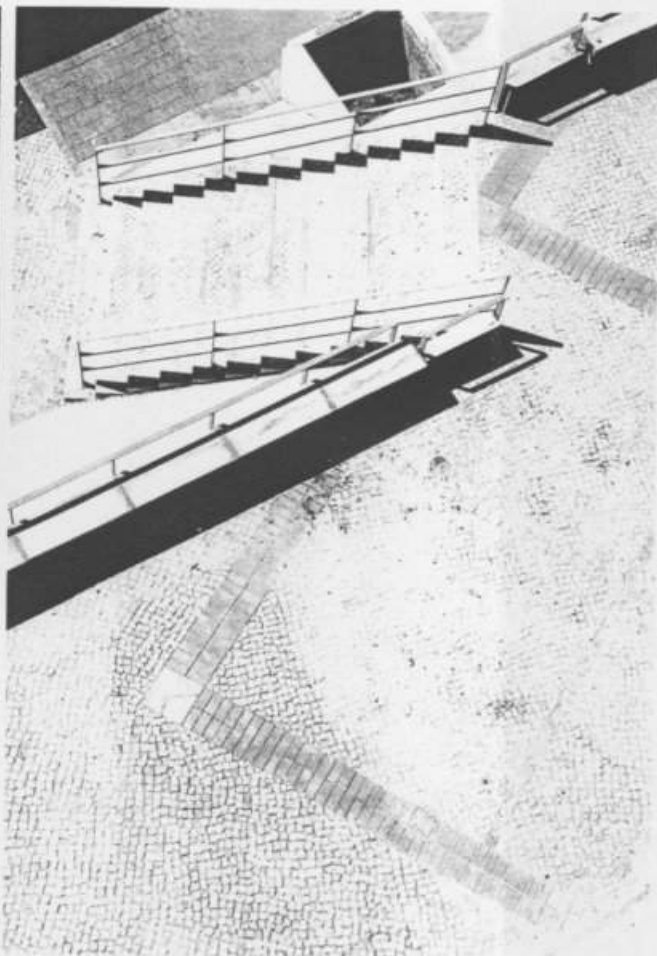
ESPAÇOS EXTERIORES
PROPOSTA PARA O BAIRRO DO ARMADOR - CHELAS
(PROJECTO CONSTRUÍDO)



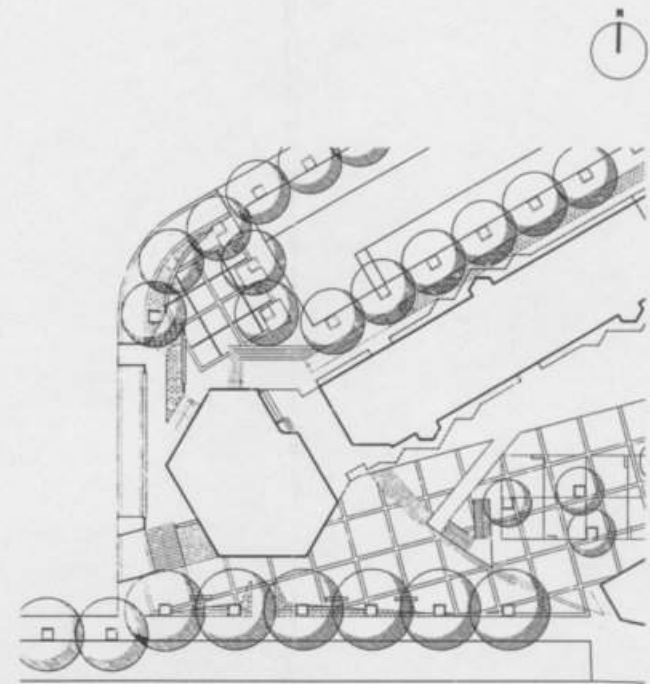
PLANO GERAL
 ÁREA DE USO PEDONAL



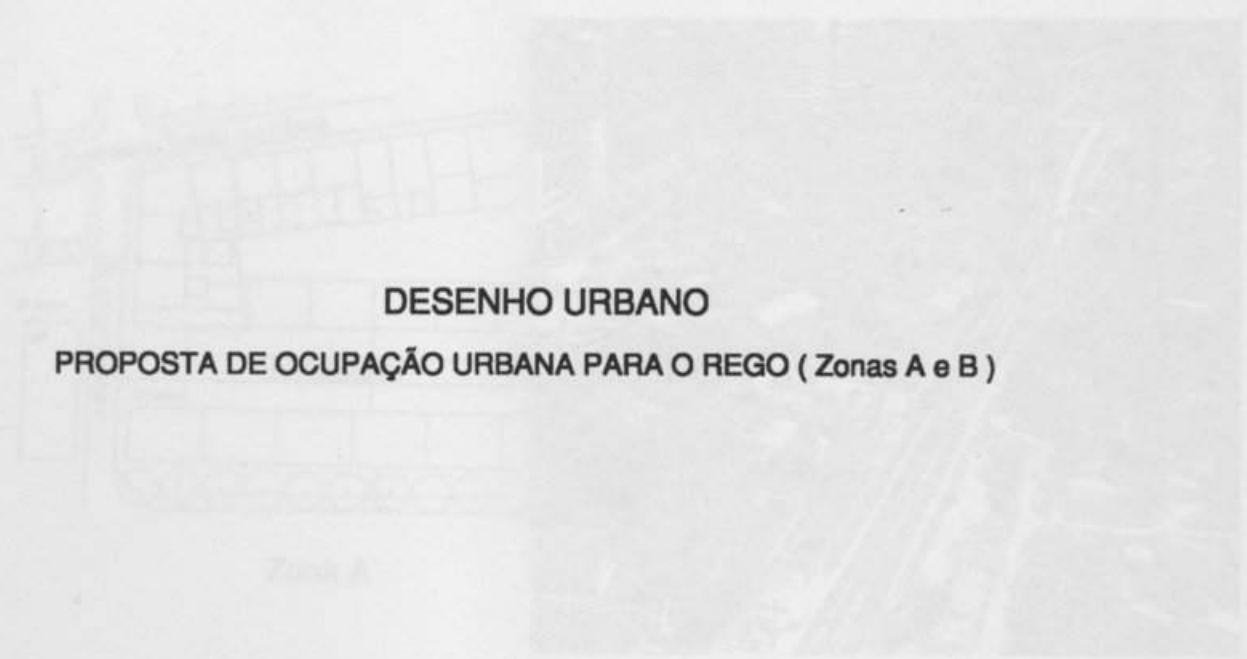
PERCURSOS



PERSPECTIVAS



PLANTA



DESENHO URBANO

PROPOSTA DE OCUPAÇÃO URBANA PARA O REGO (Zonas A e B)



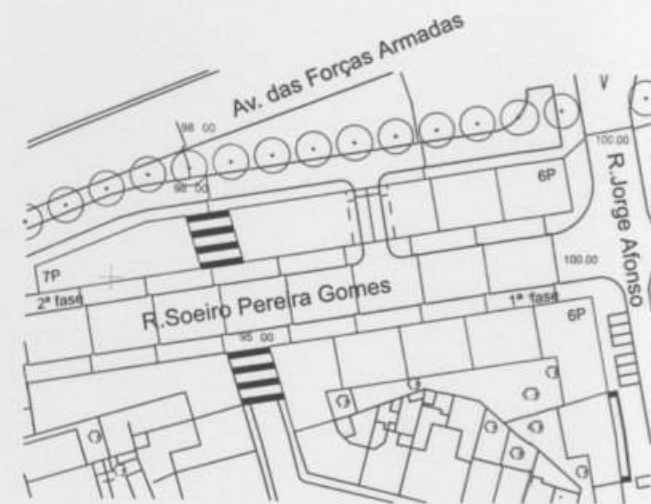
LOCALIZAÇÃO



INSERÇÃO URBANA



Zona A



Zona B

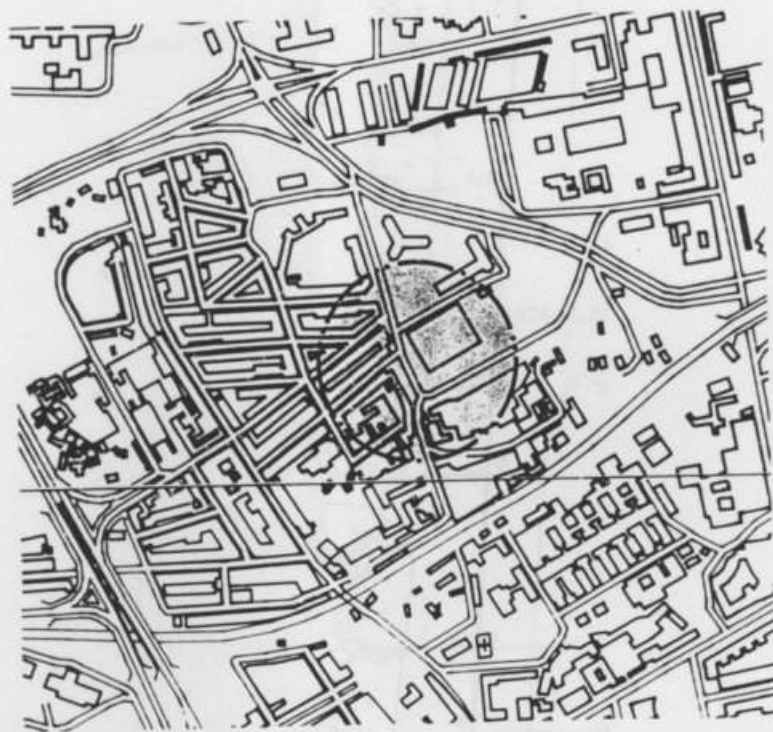


VISTA DO EXISTENTE



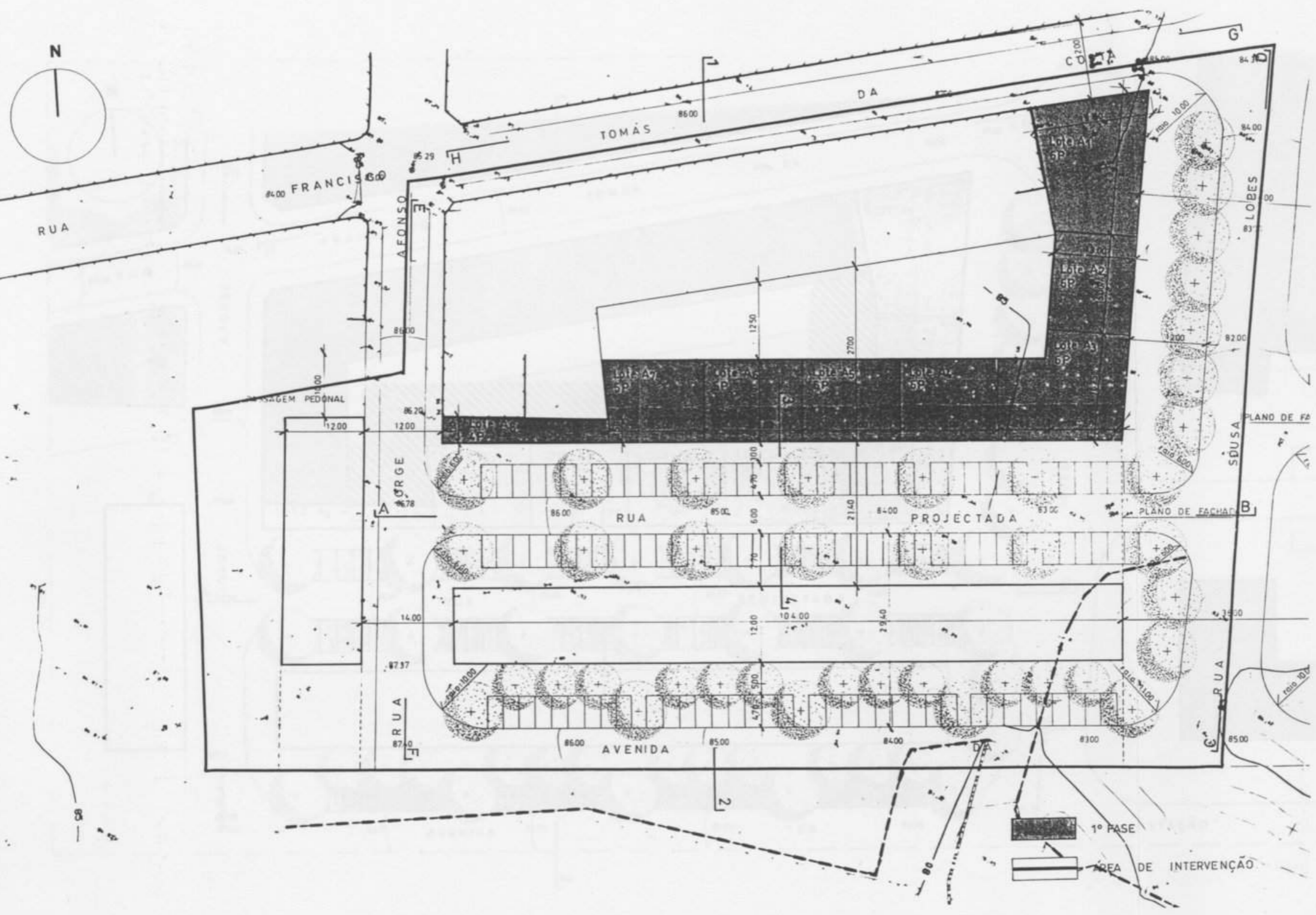
LOCALIZAÇÃO

REGO - ZONA A

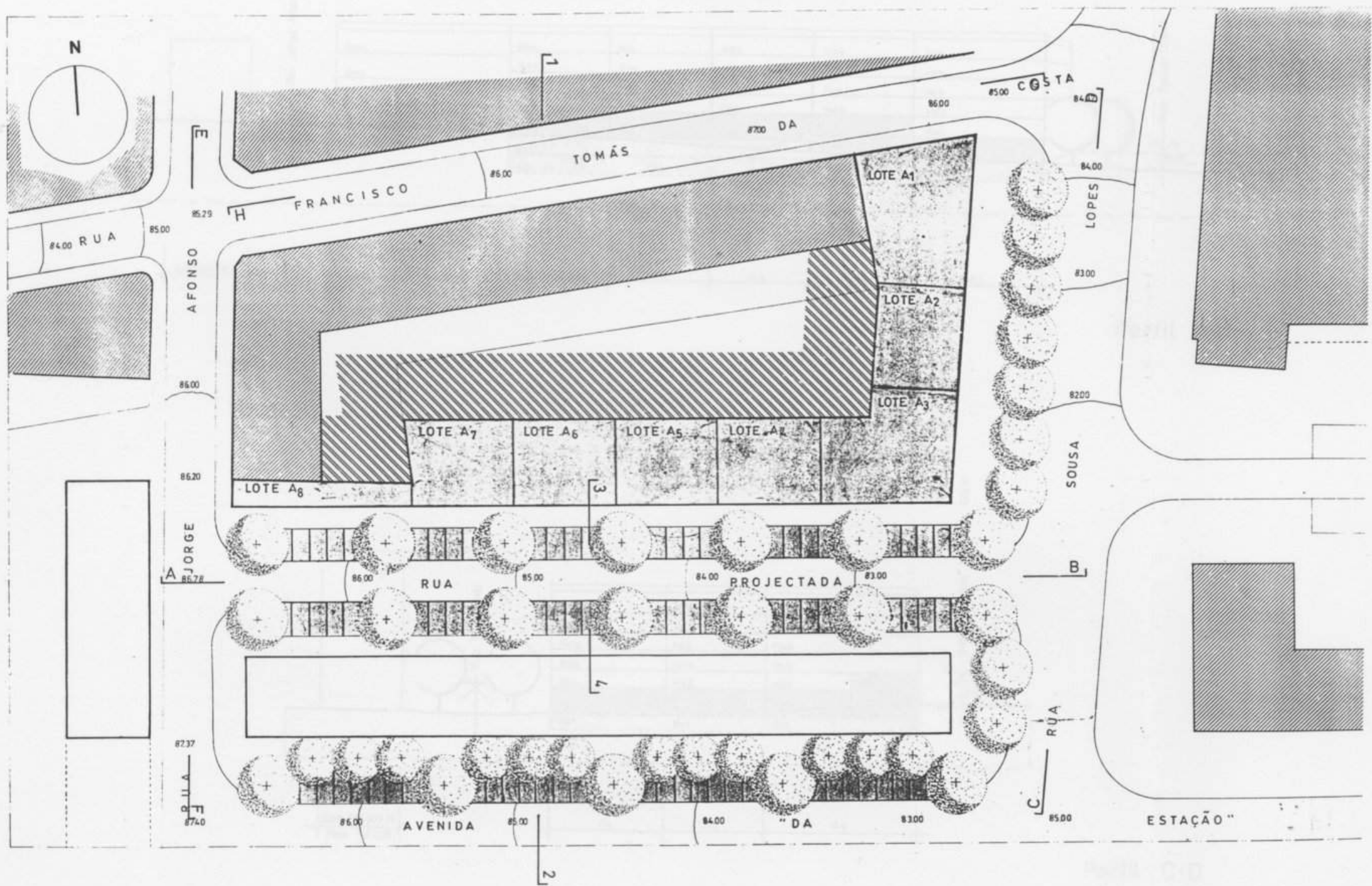


LOCALIZAÇÃO

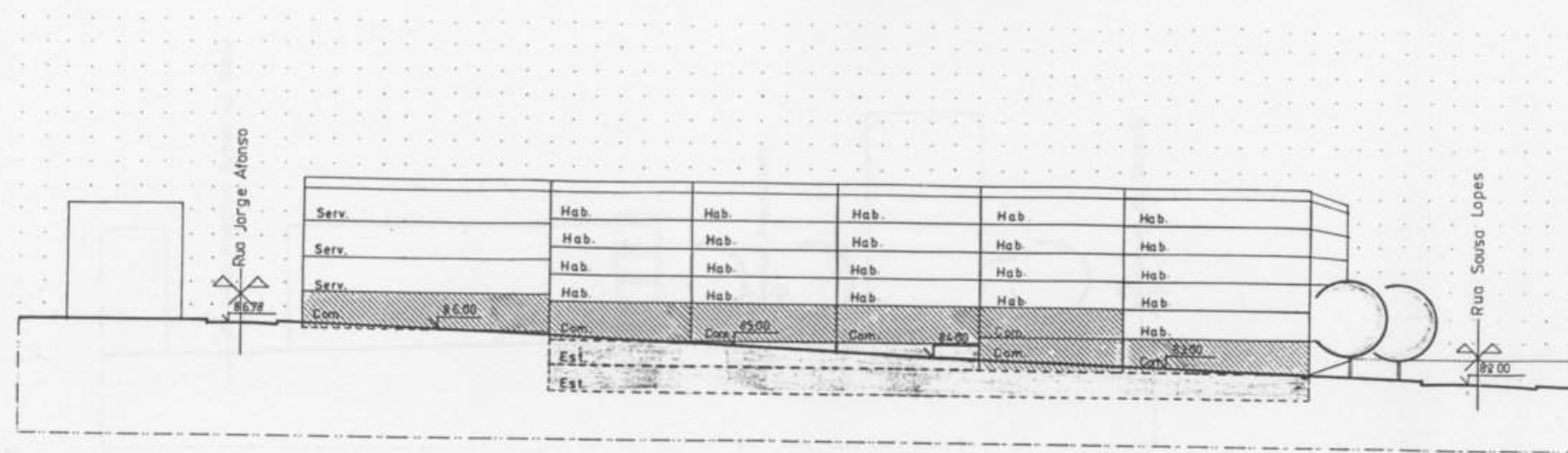
PLANTA TÉCNICA



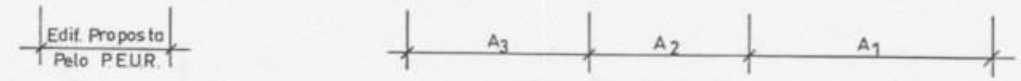
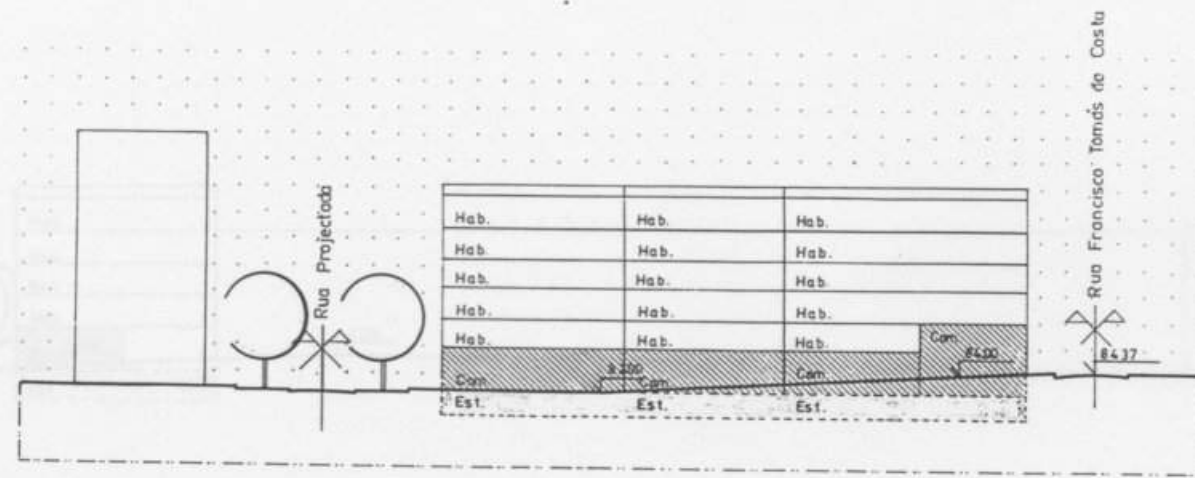
PLANTA TÉCNICA



PLANTA DE APRESENTAÇÃO

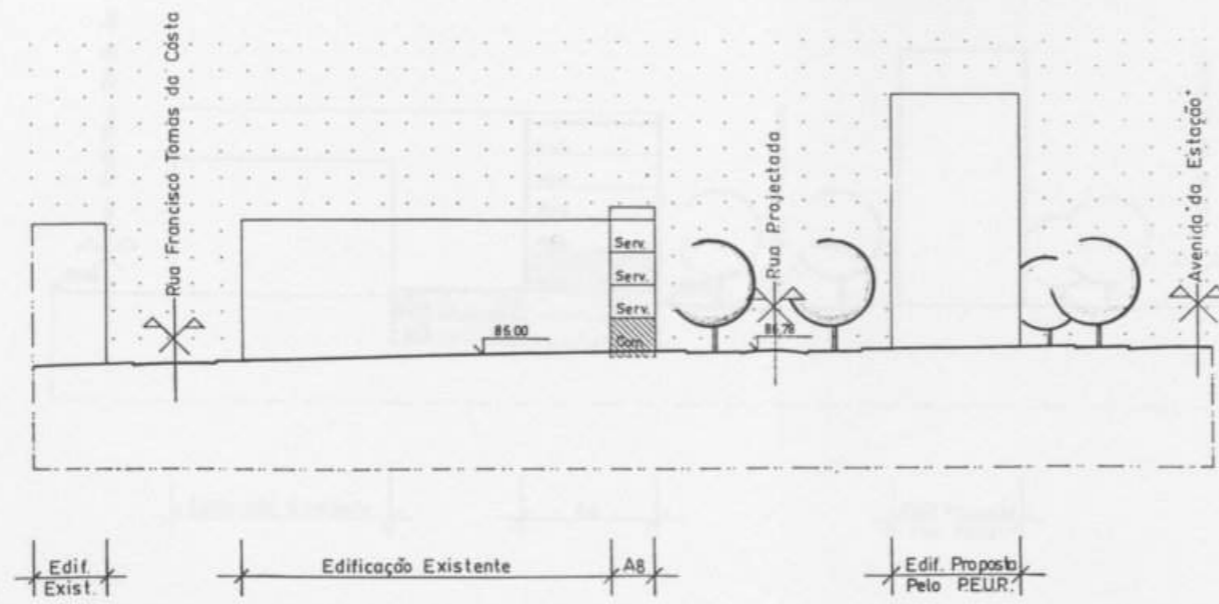


Perfil A:B

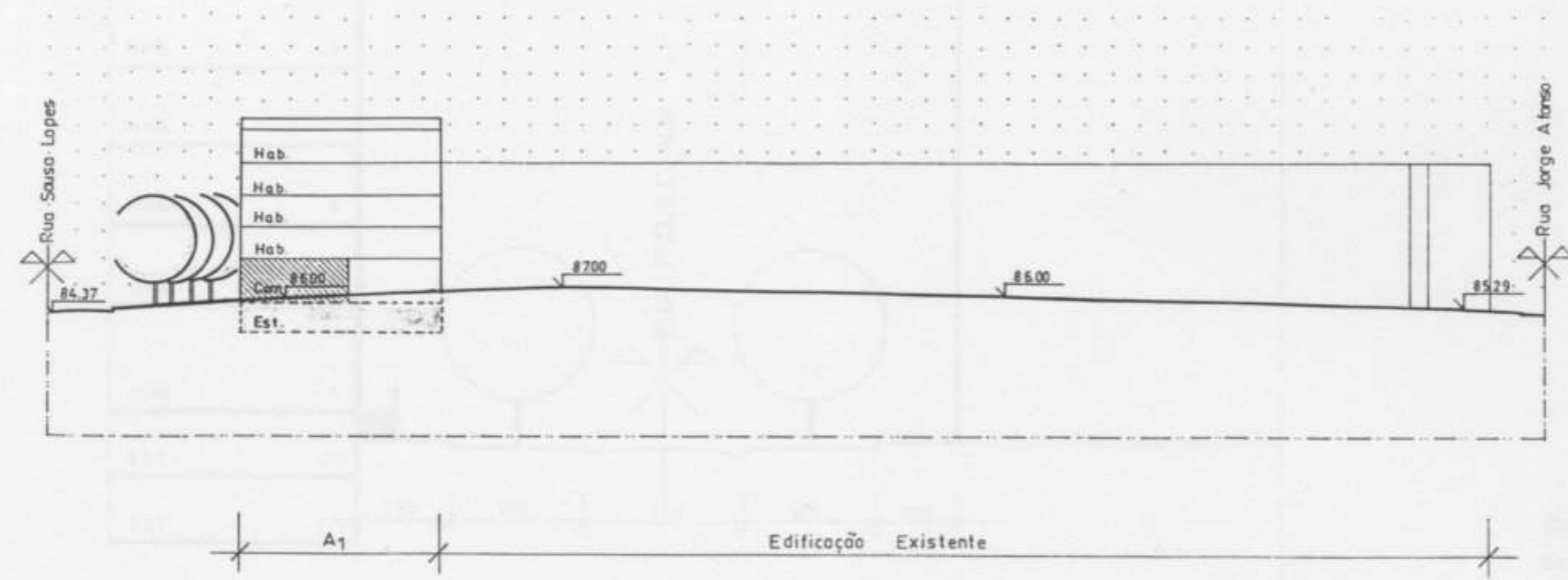


Perfil C:D

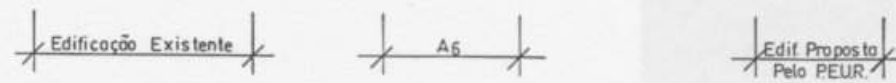
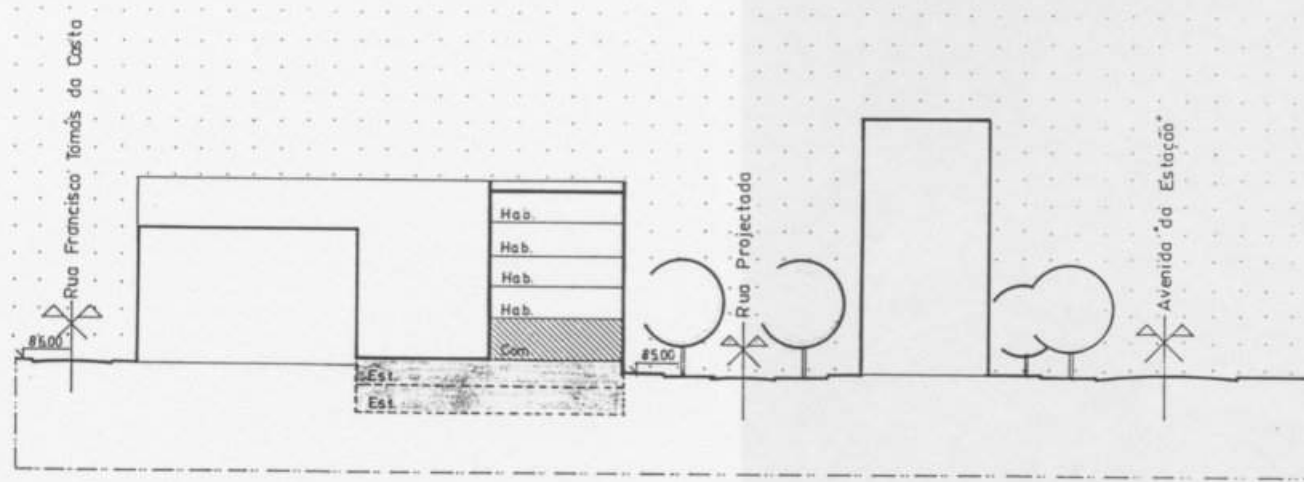
PERFIS



Perfil E:F



Perfil G:H



Perfil 1:2



Perfil 3:4
Escala 1/200



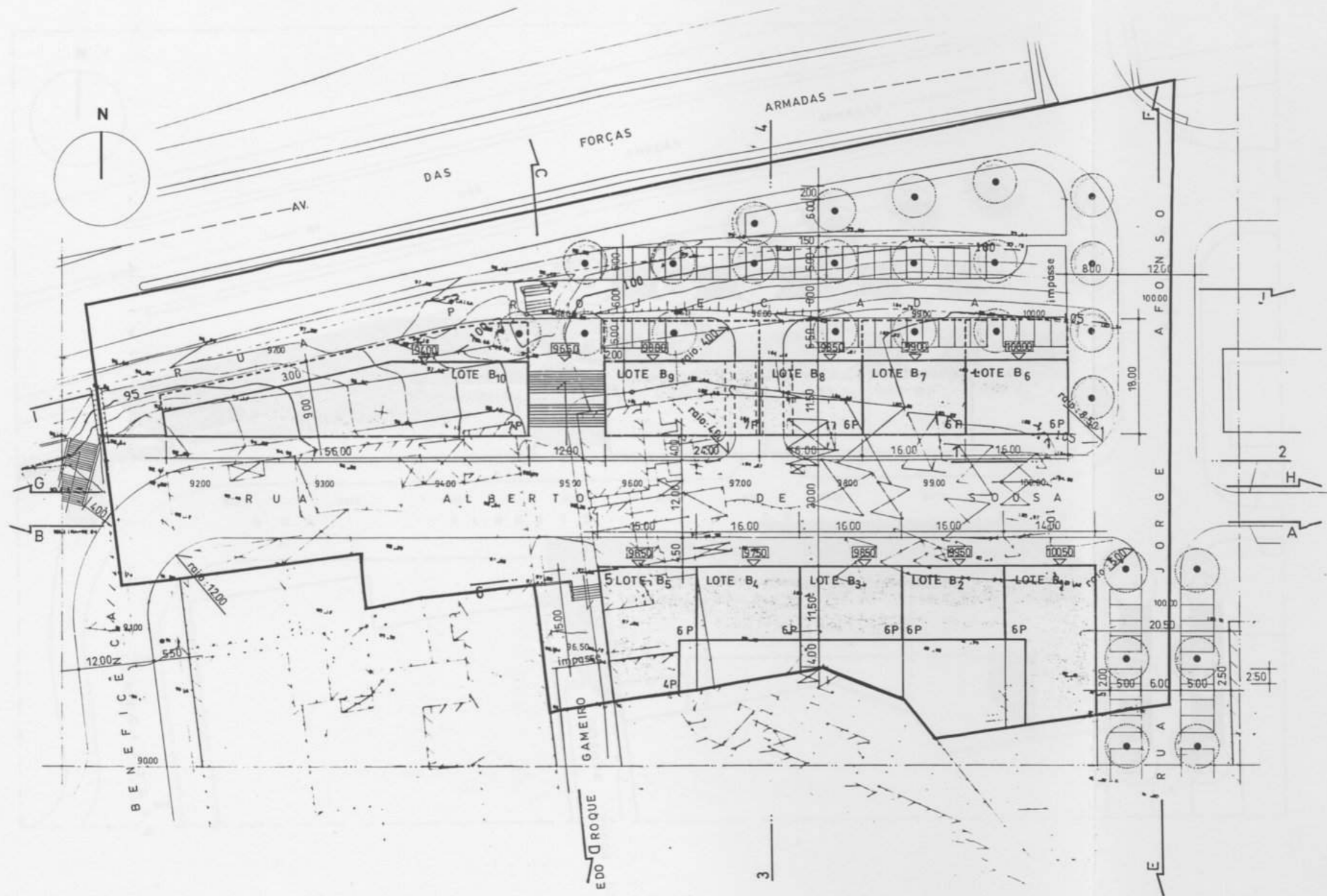
REGO - ZONA B

LOCALITÀ

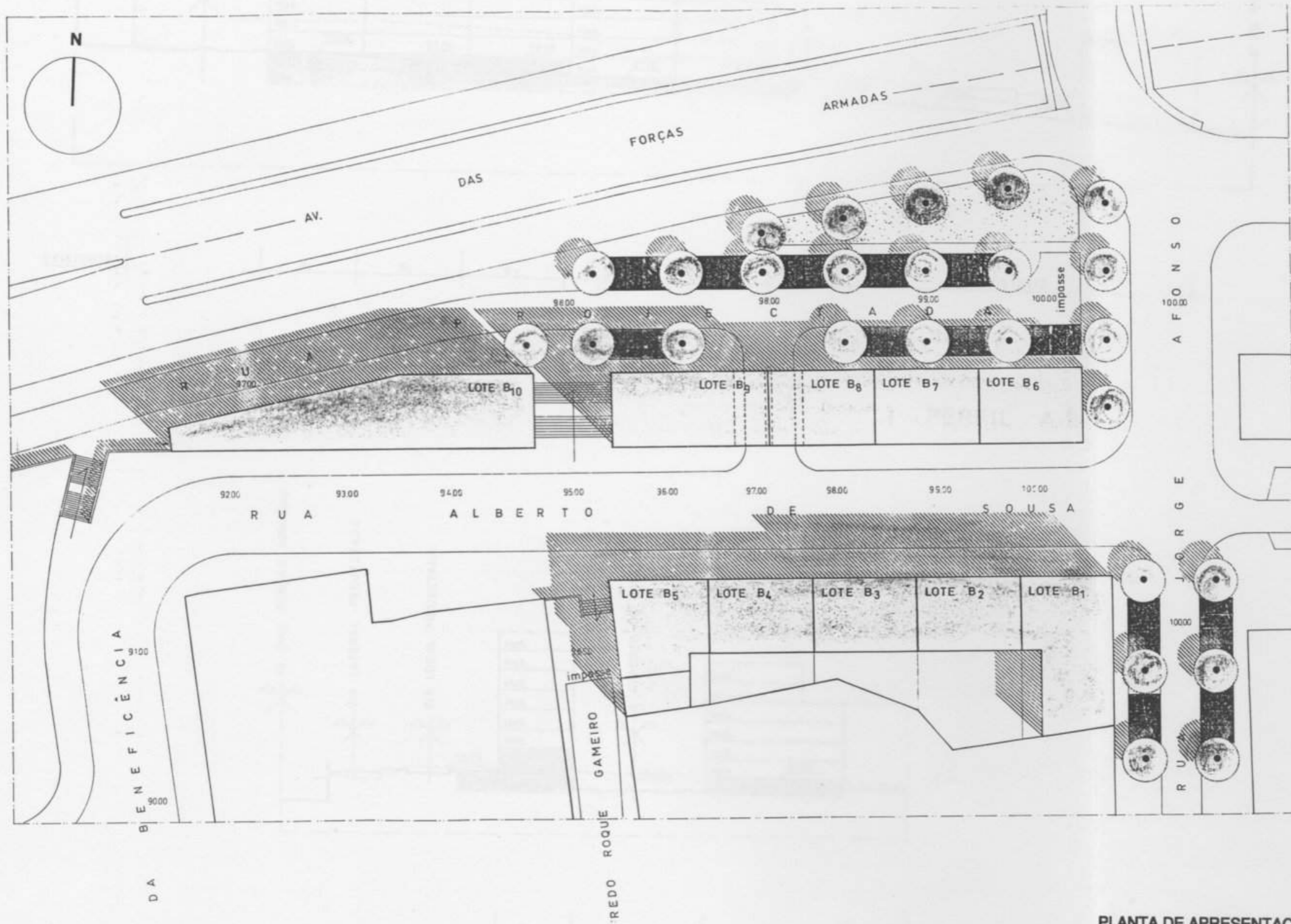


LOCALIZAÇÃO

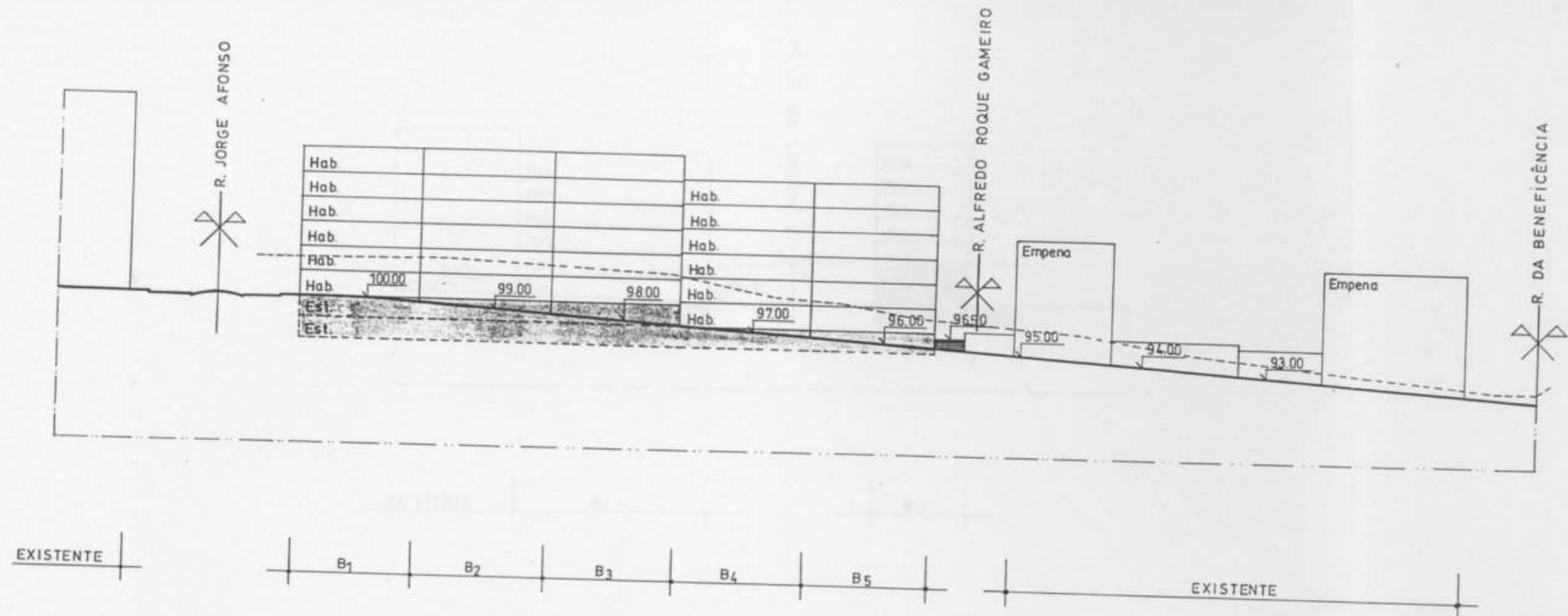
PLANTA TÉCNICA



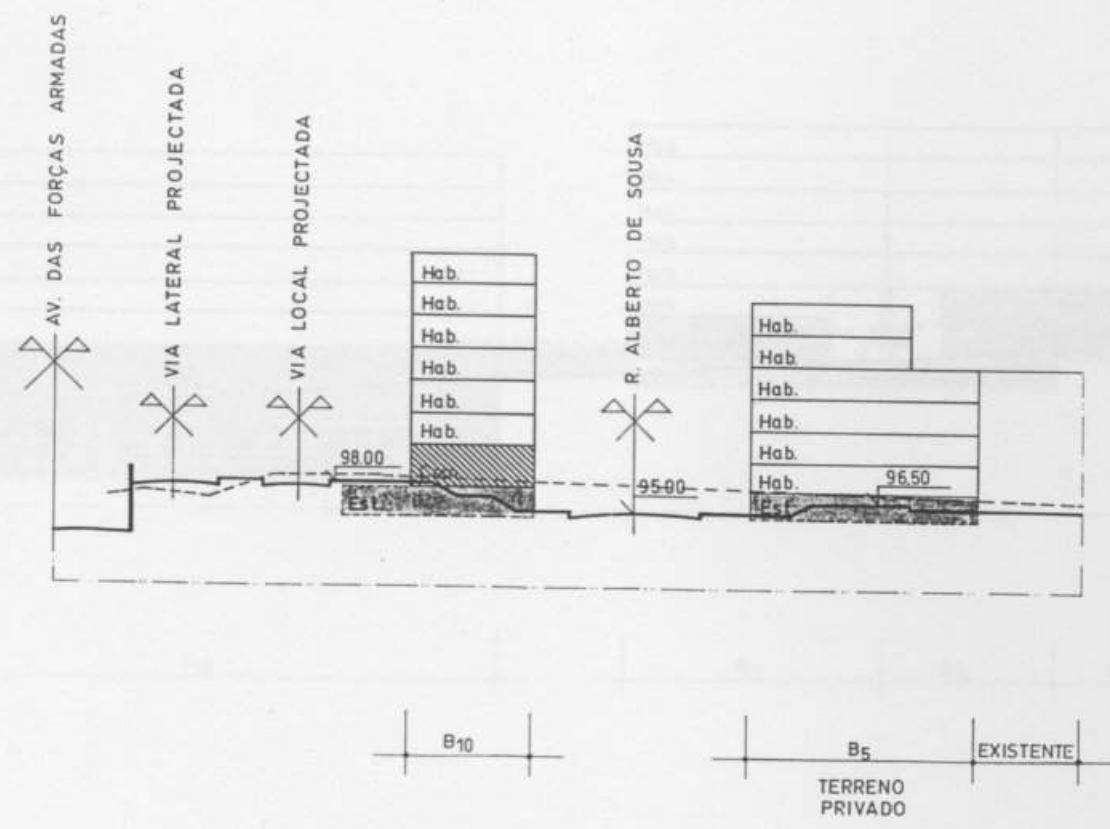
PLANTA TÉCNICA



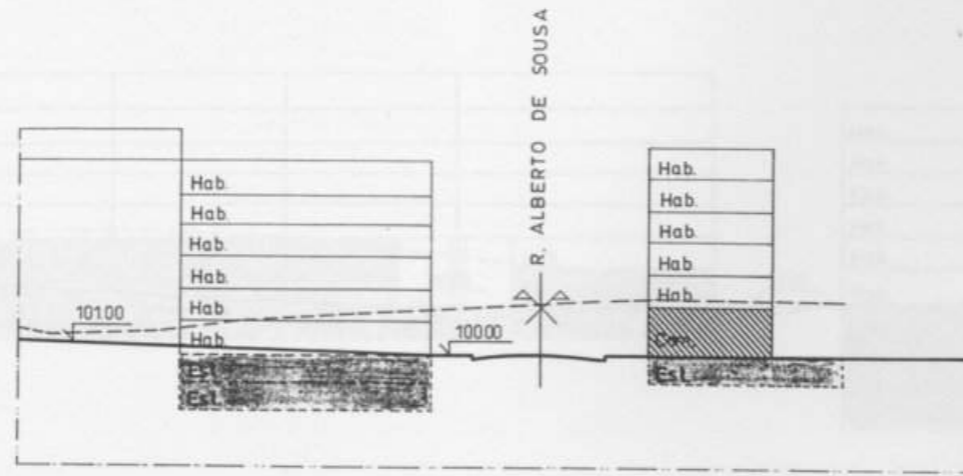
PLANTA DE APRESENTAÇÃO



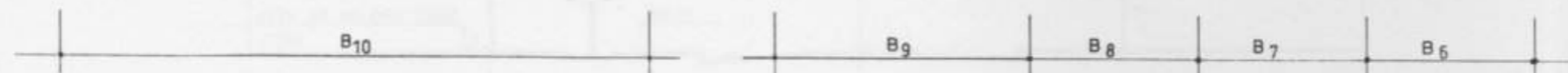
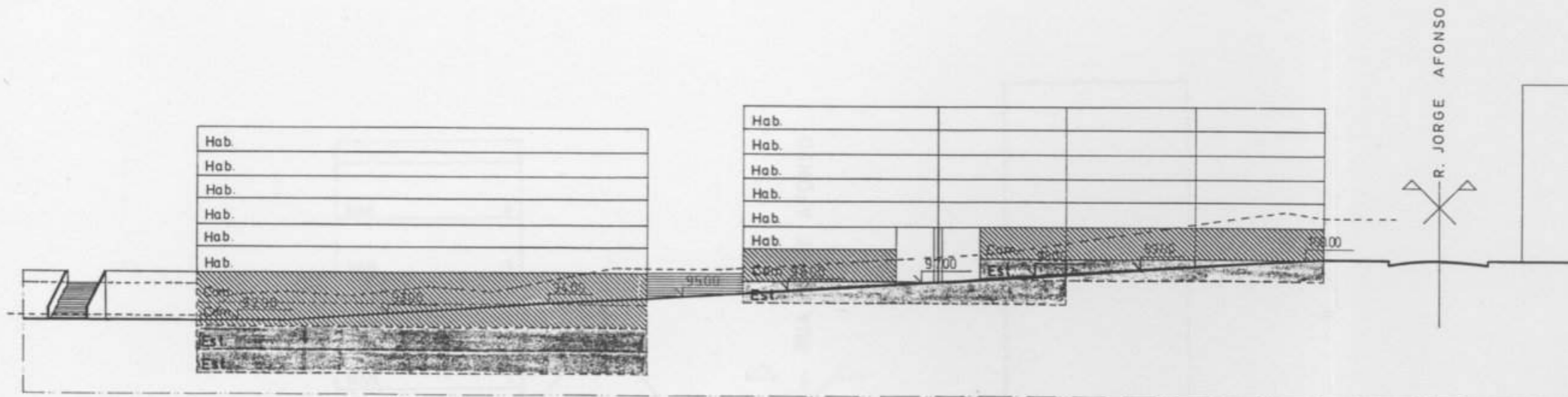
PERFIL A:B



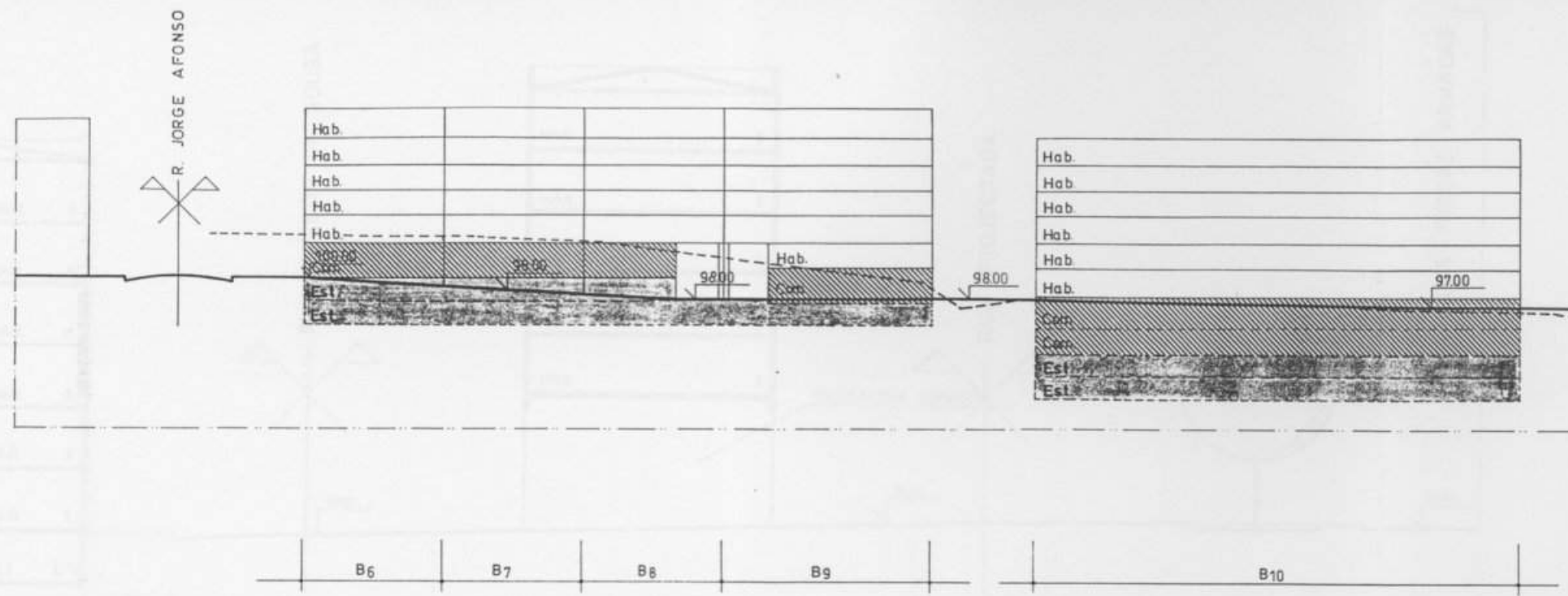
PERFIL C:D



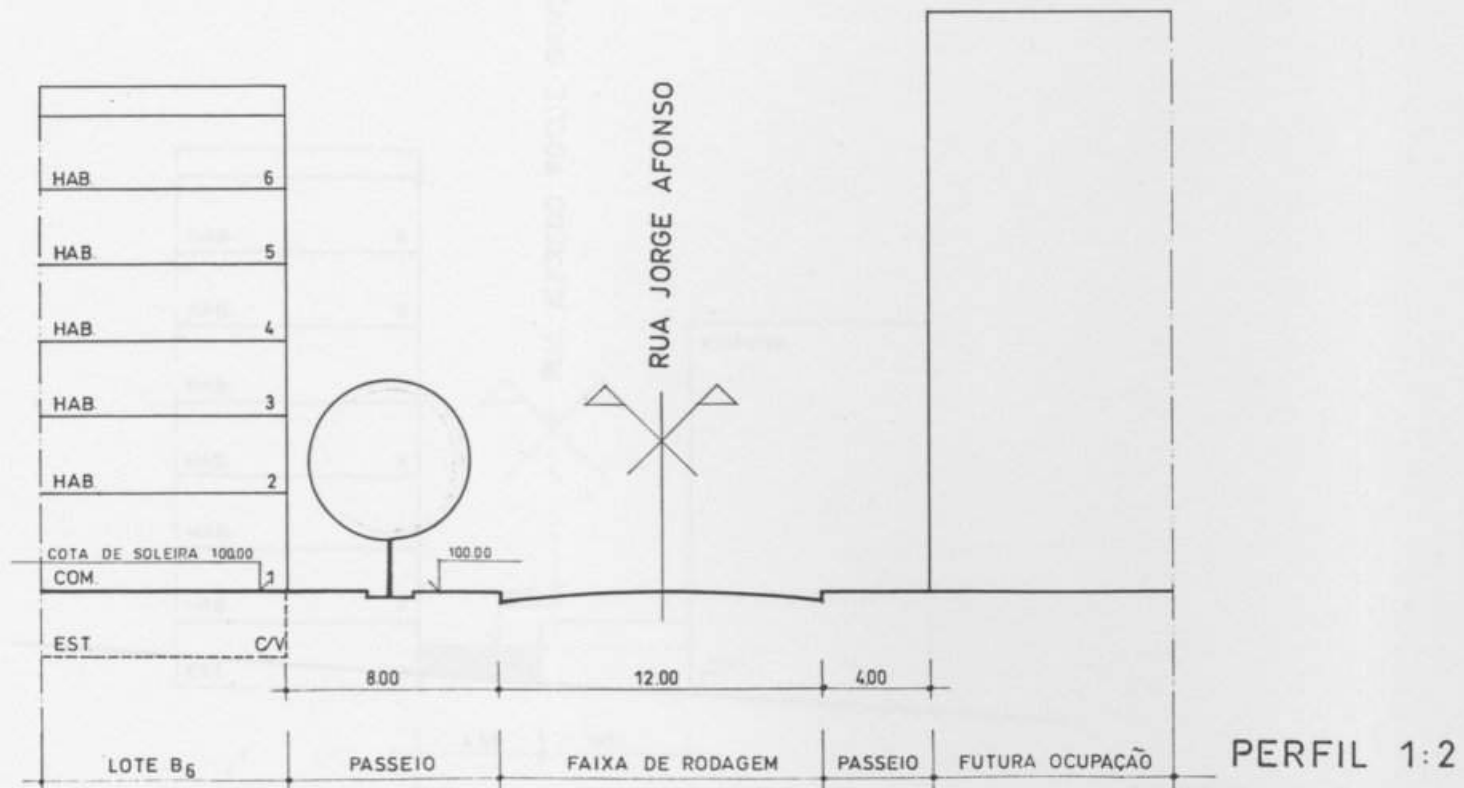
PERFIL E:F



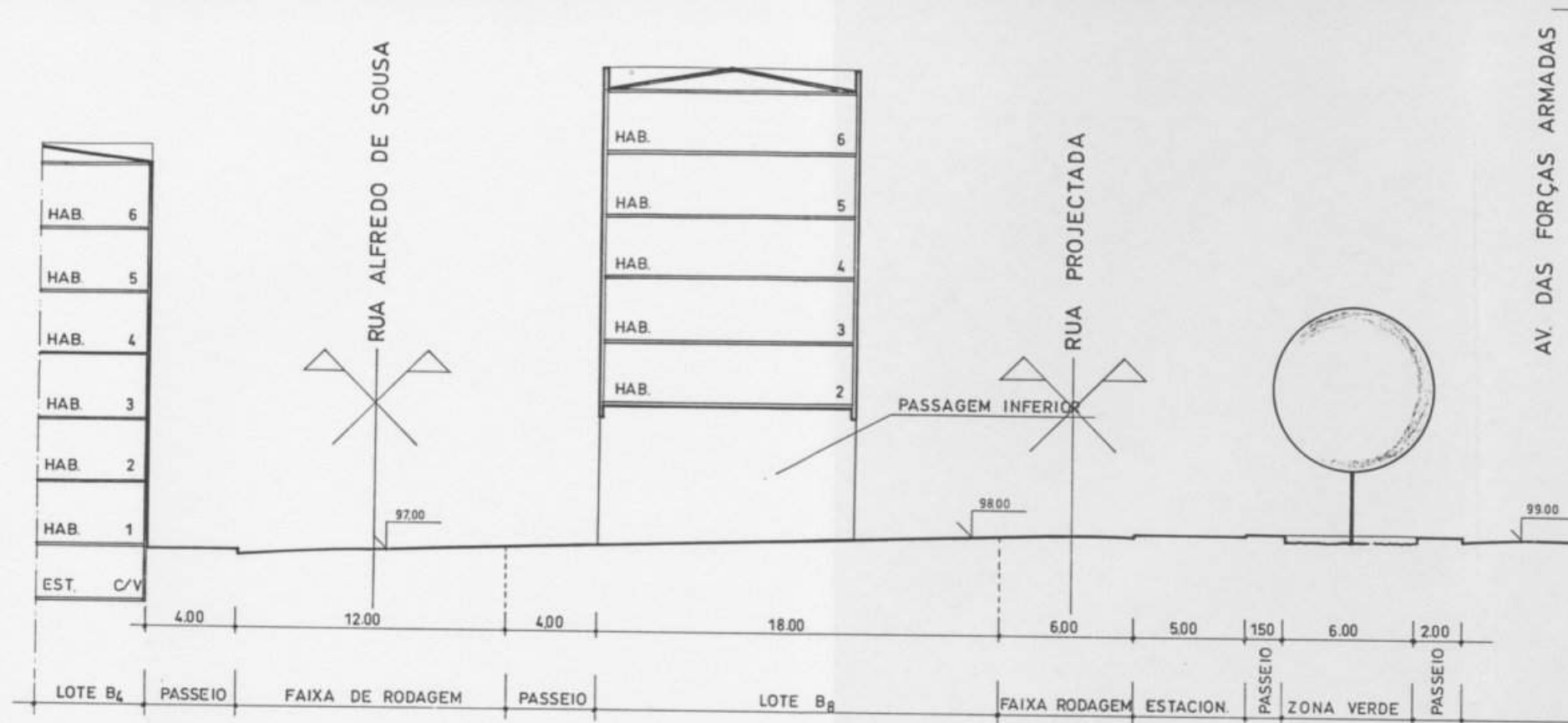
PERFIL G:H



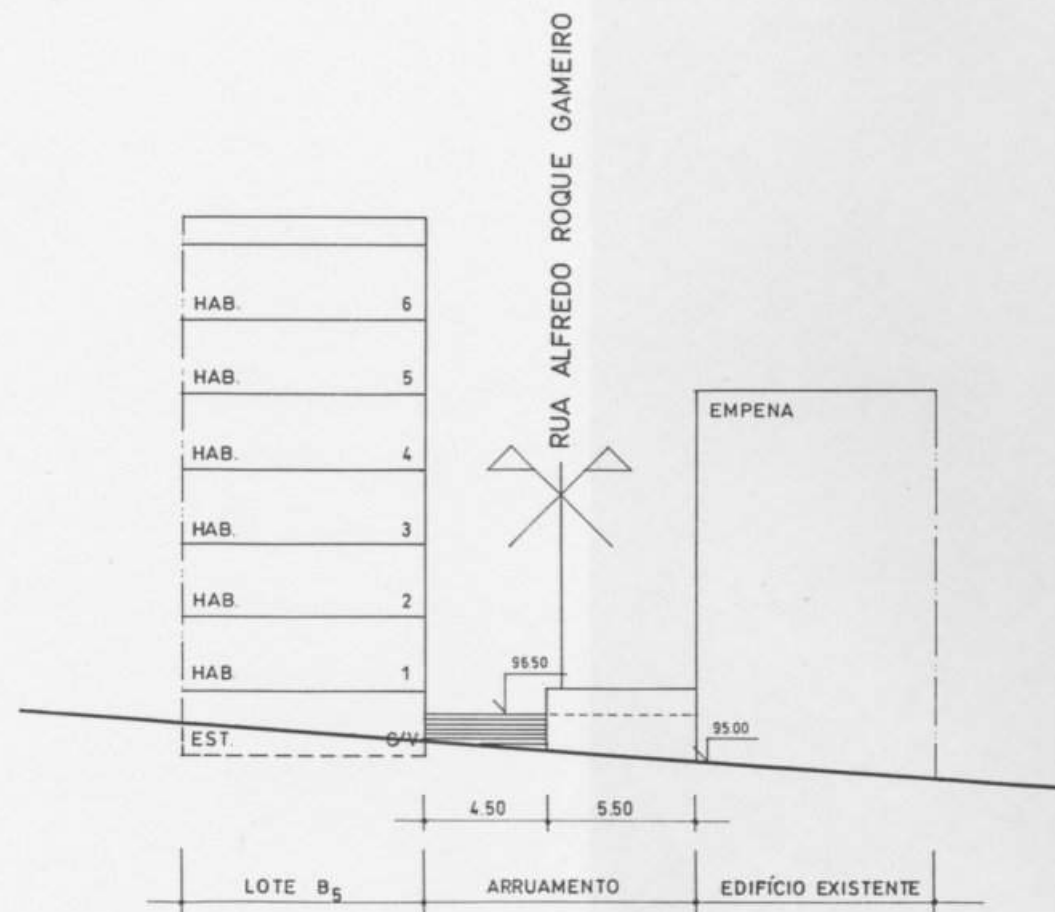
PERFIL I:J



PERFIL 1:2




PERFIL 3:4



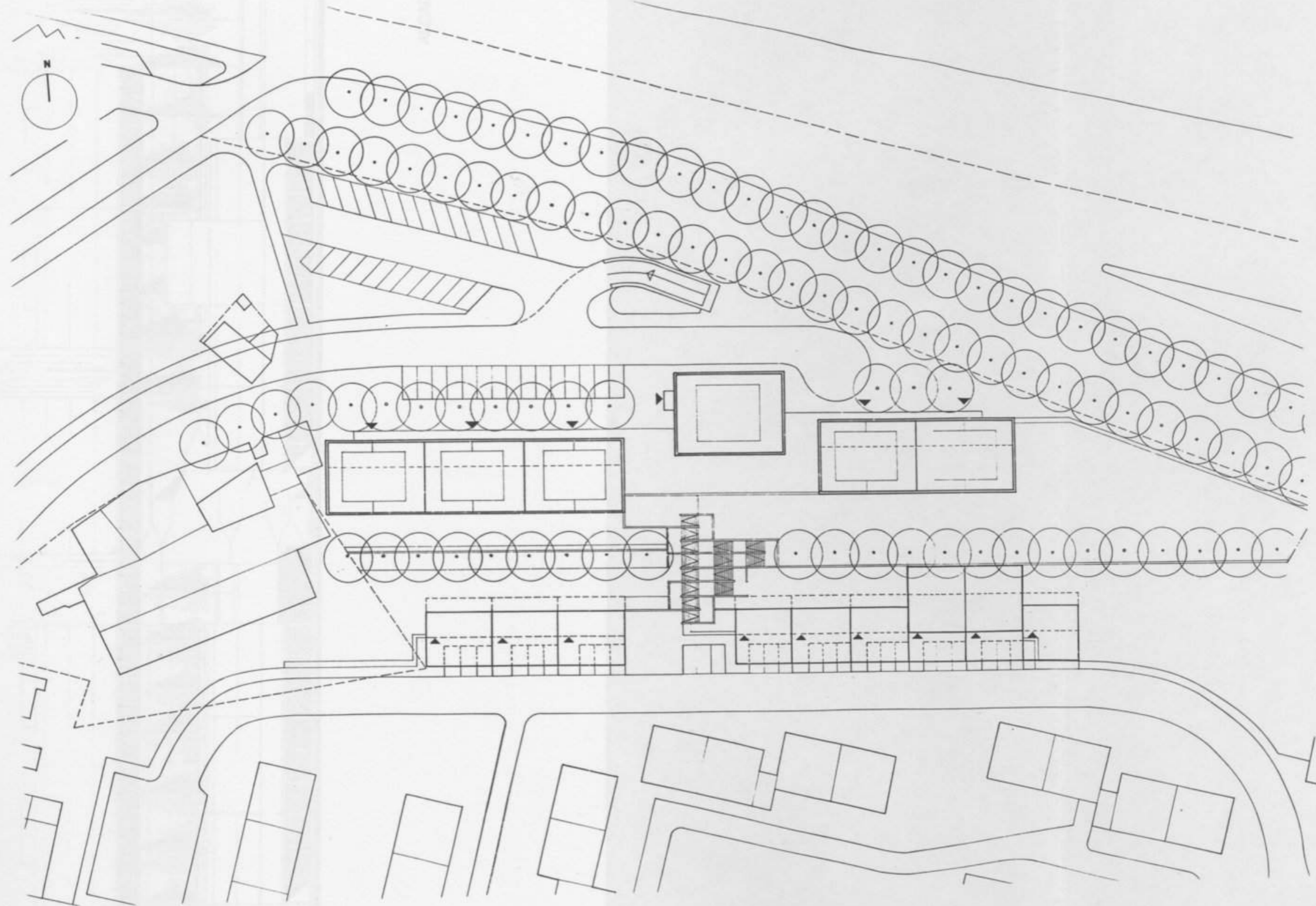
PERFIL 5:6

DESENHO URBANO

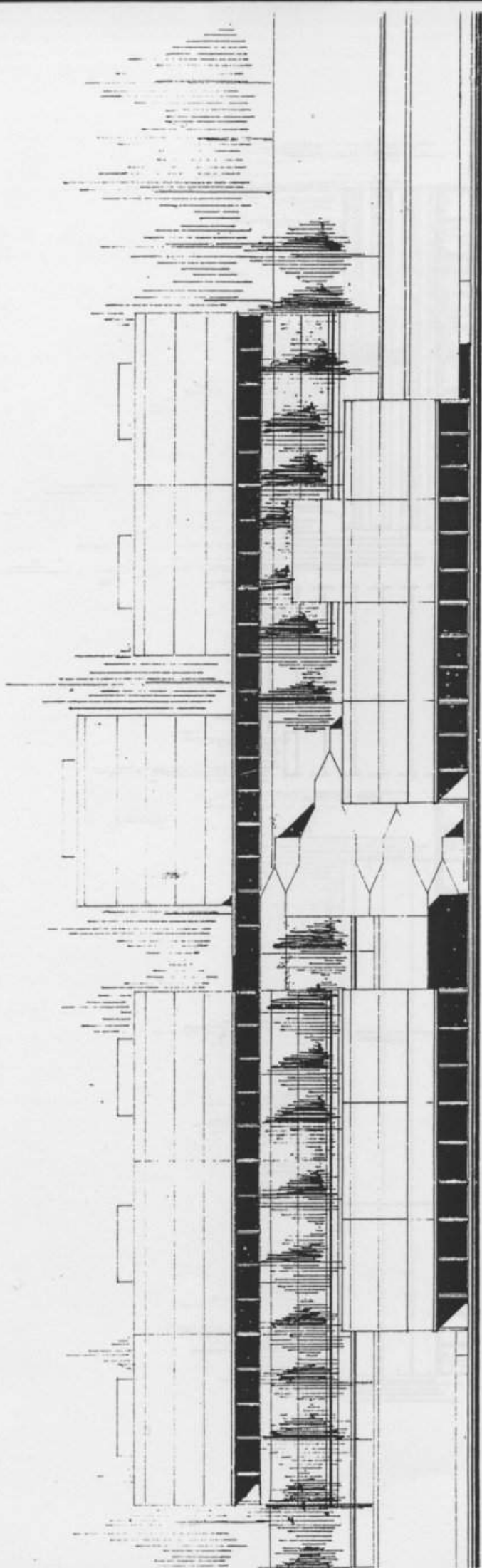


DESENHO URBANO

PLANTA PROPOSTA

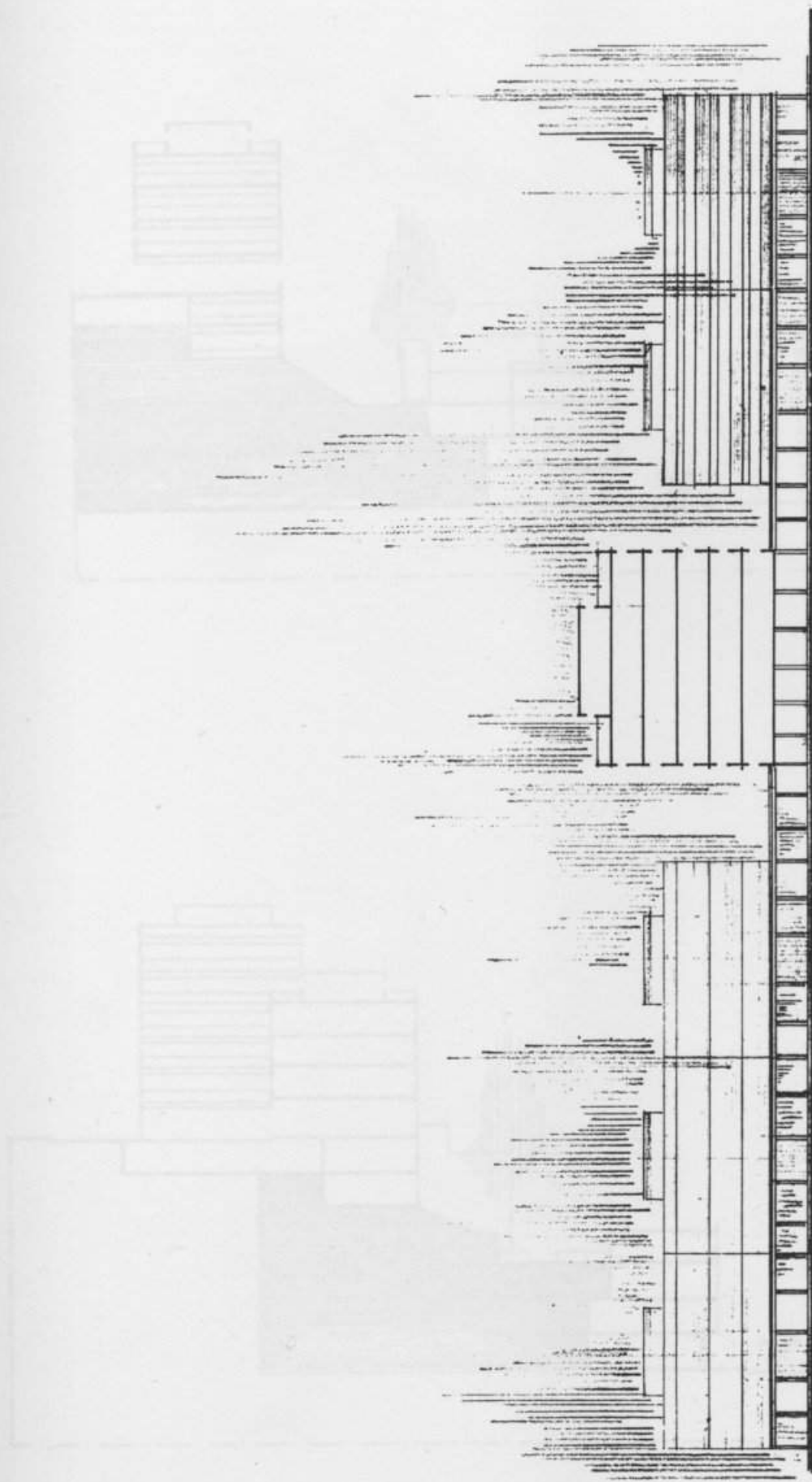


PLANTA PROPOSTA



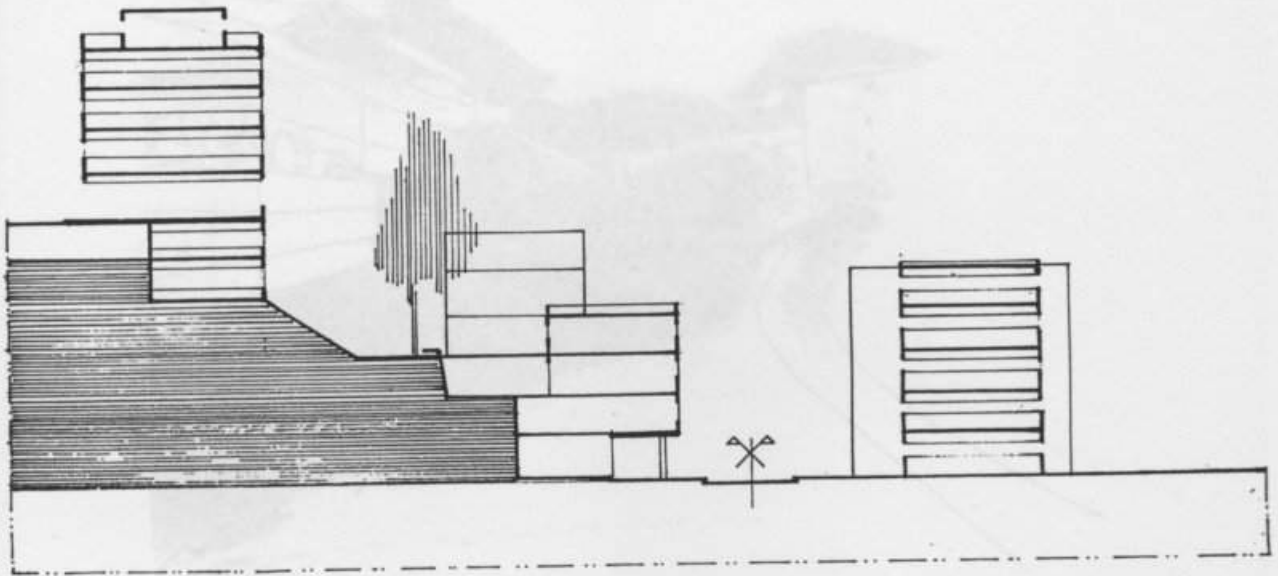
ALÇADO PRINCIPAL

CORTE A : A'

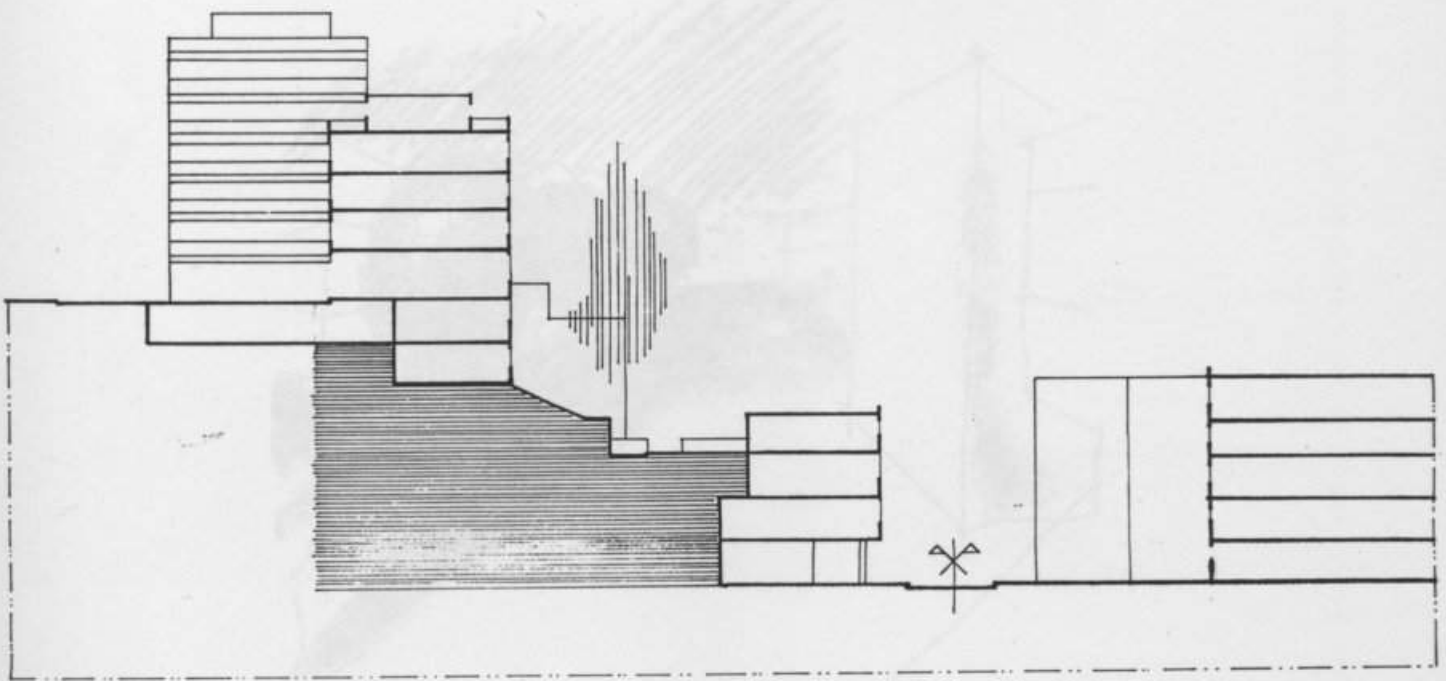


CORTE B - B'

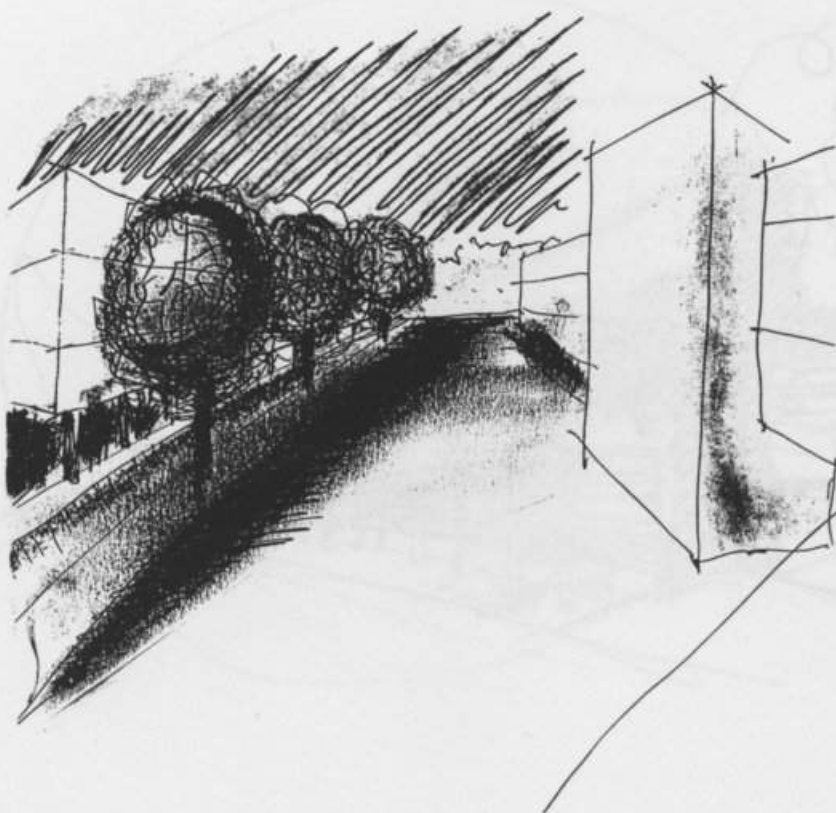
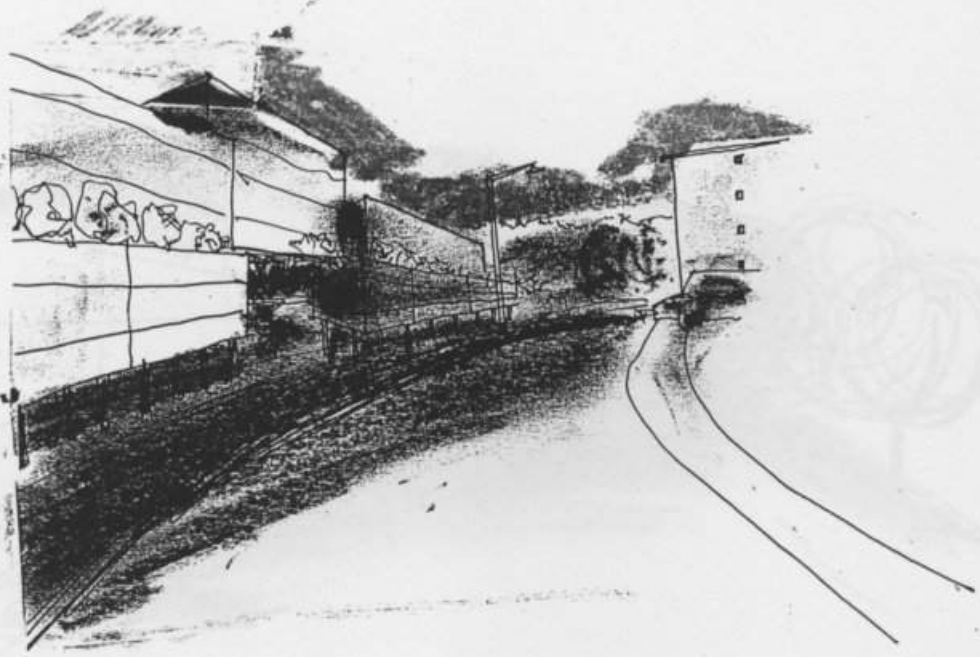
CORTE C - C'

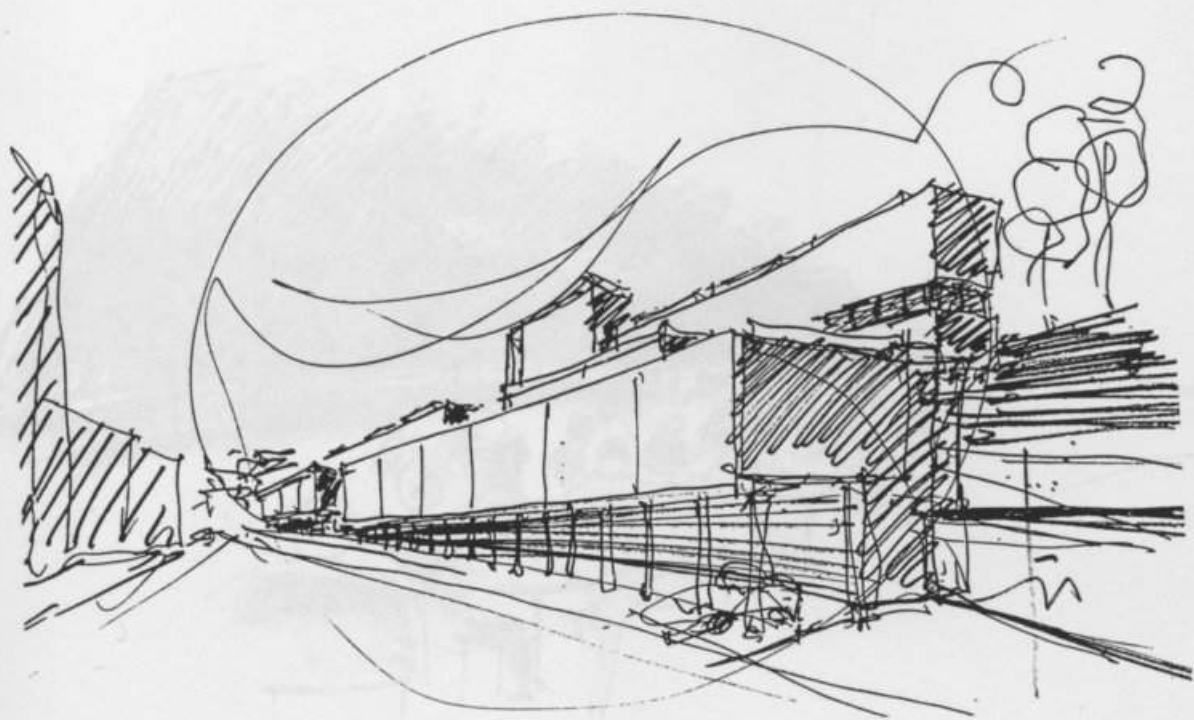
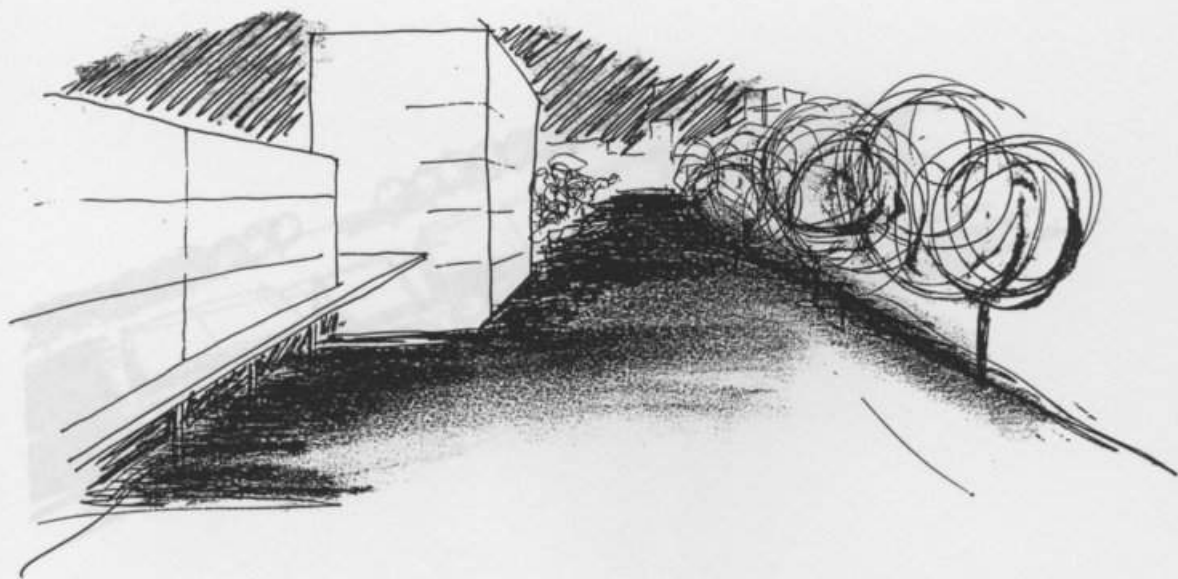


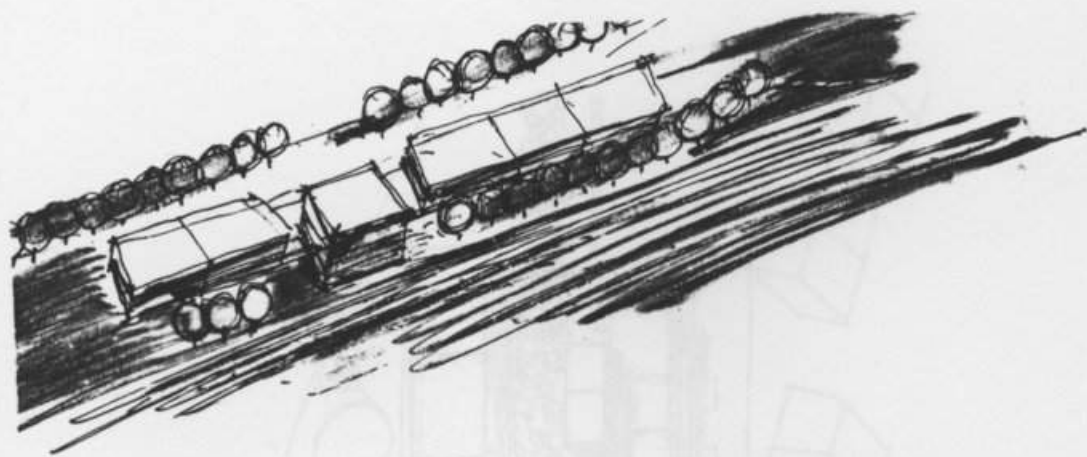
CORTE B : B'

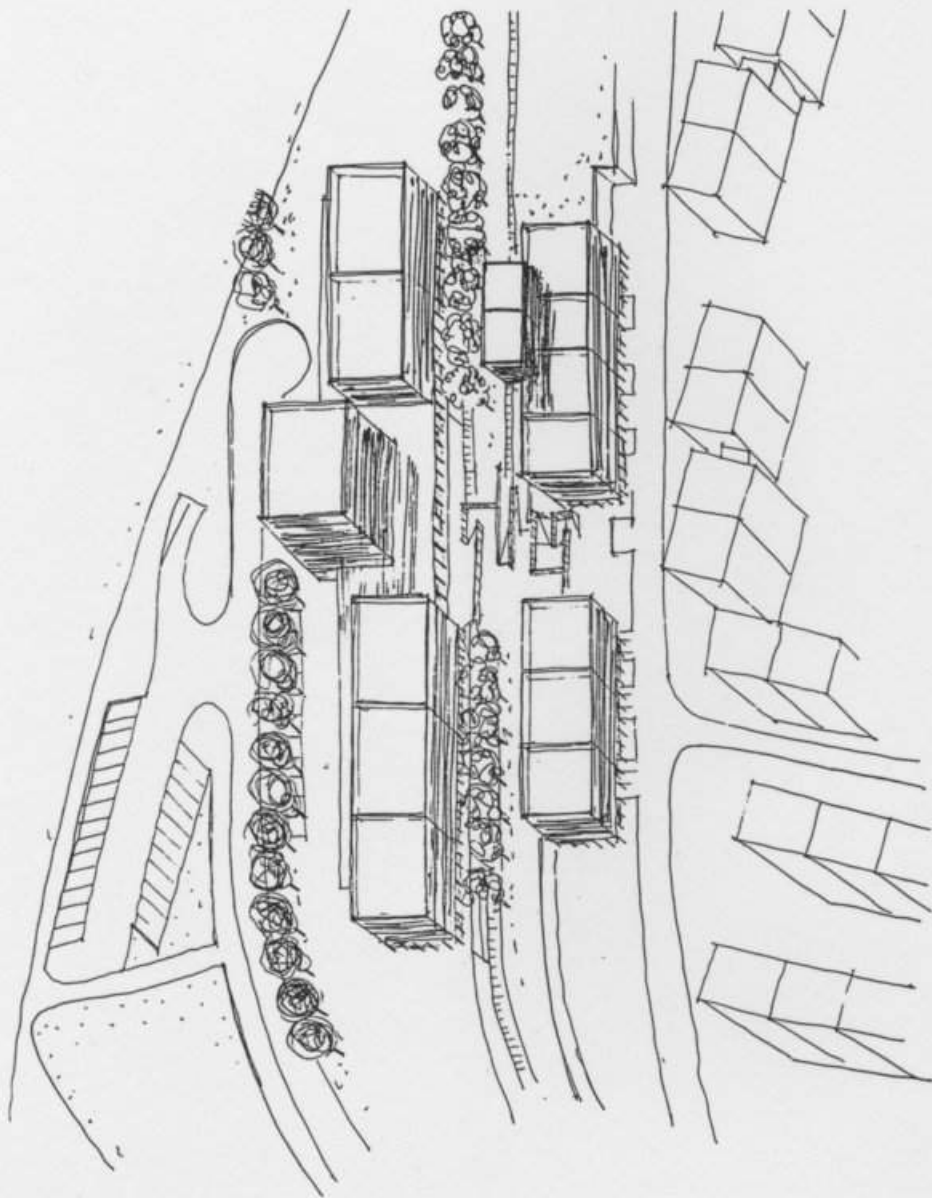


CORTE C : C'









ANEXO IV

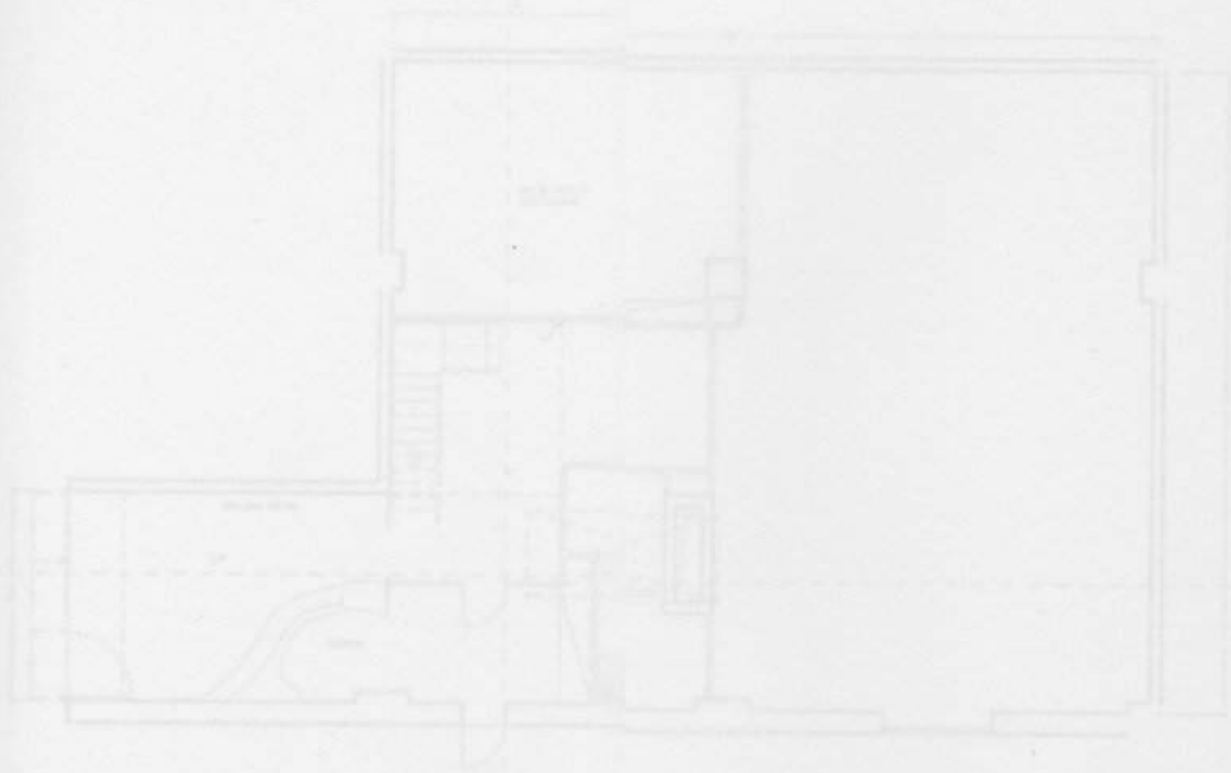
TRABALHOS REALIZADOS PARCIALMENTE

PERSPECTIVA

ARQUITECTURA

ANEXO IV

TRABALHOS REALIZADOS PARTICULARMENTE



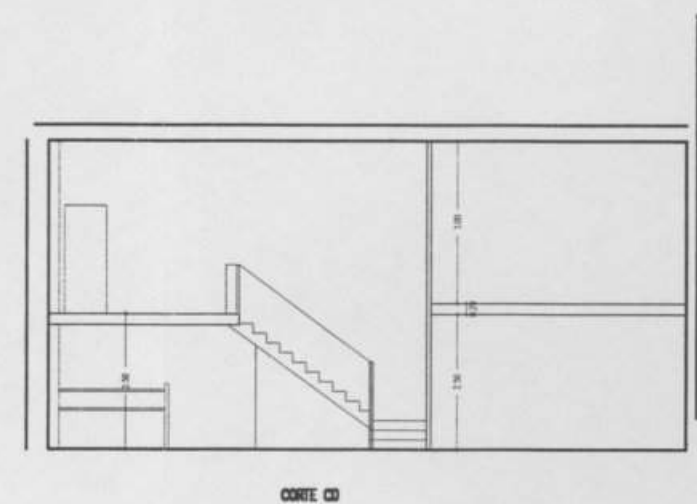
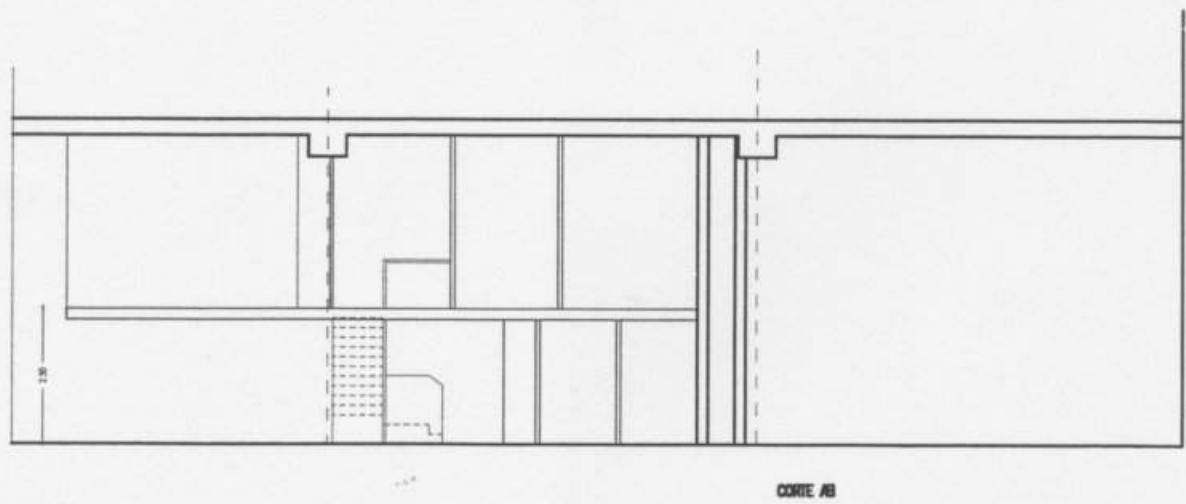
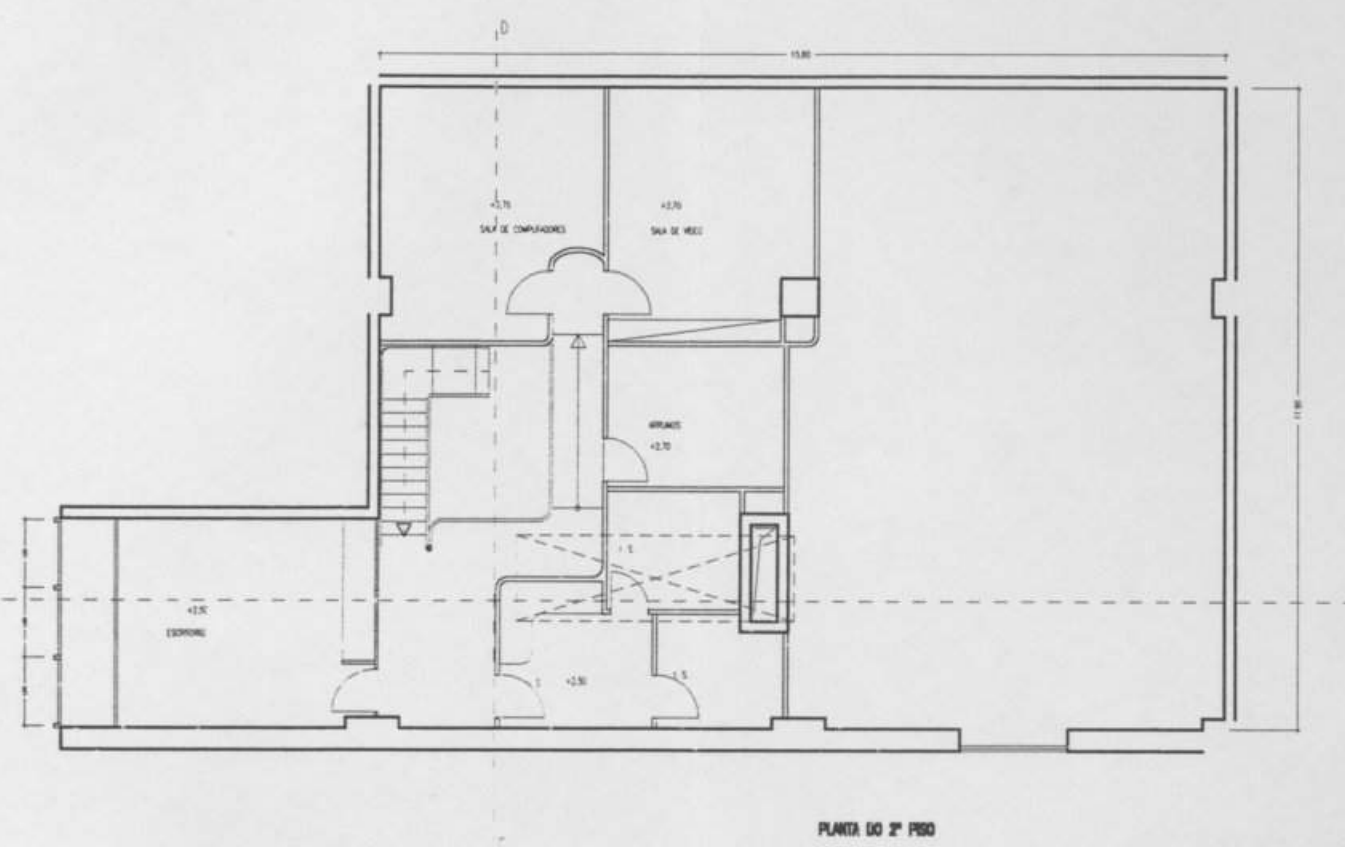
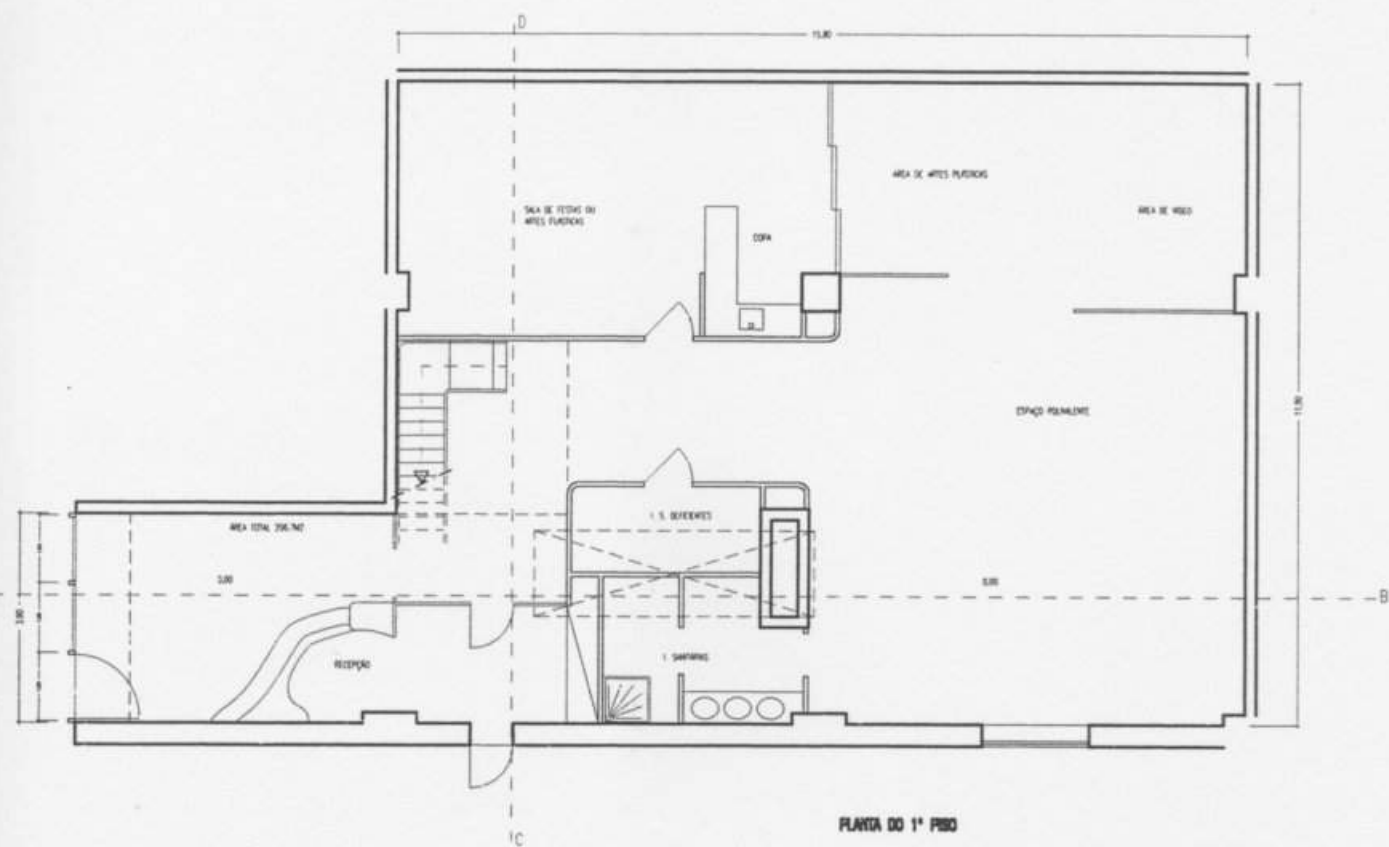
FOLHA 02 DE 02



ARQUITECTURA
LOJA - BICHINHOS CARPINTEIROS
NORTE SHOPPING



LOJA - BICHINHOS CARPINTEIROS
NORTE SHOPPING
PLANTAS E CORTES



PROJECTO DE REMODELAÇÃO - RÚNICO DA HABITAÇÃO
 PARA O S. BARRAS - ARRANCO

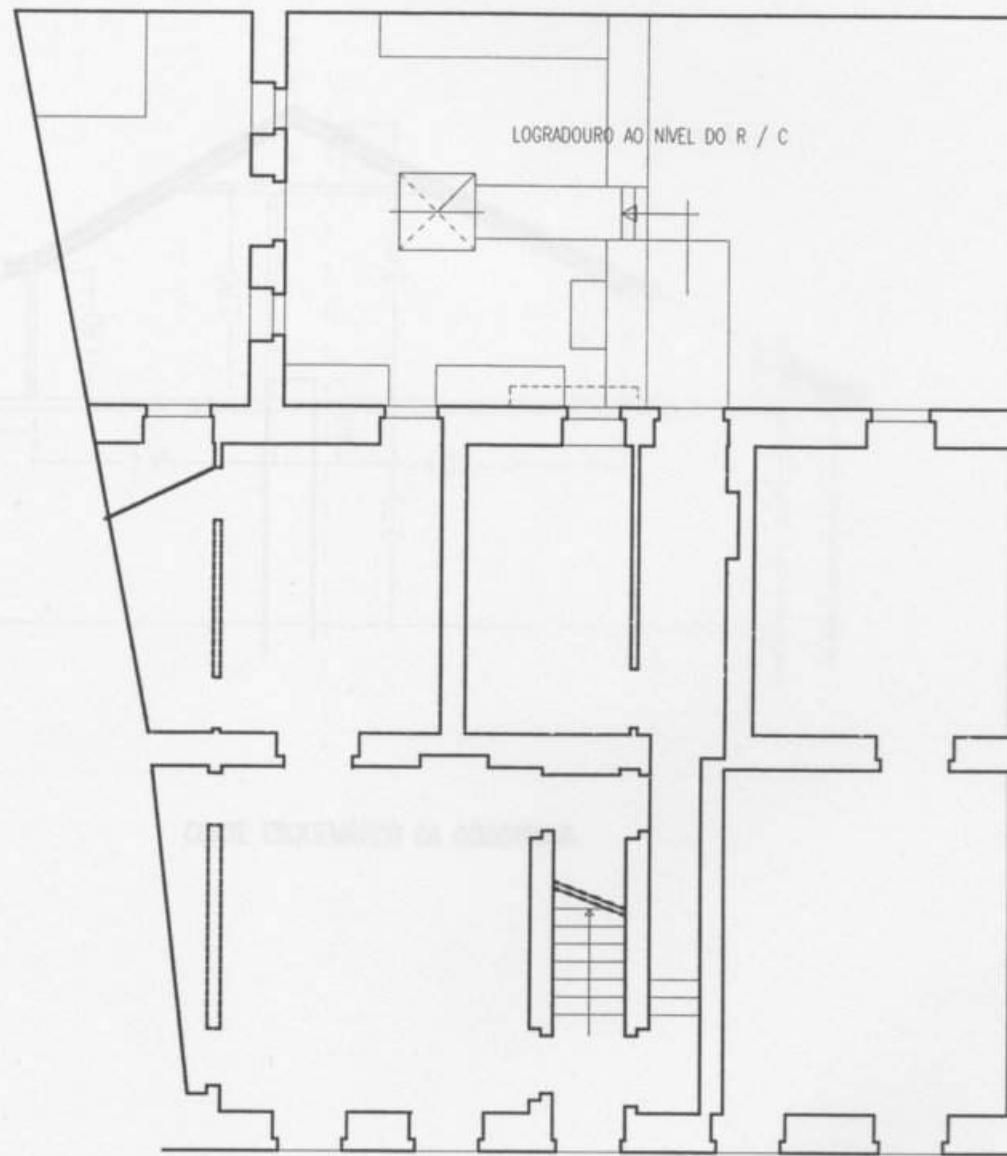


LOJA - BICHINHOS CARPINTEIROS
 NORTE SHOPPING
 PLANTAS E CORTES

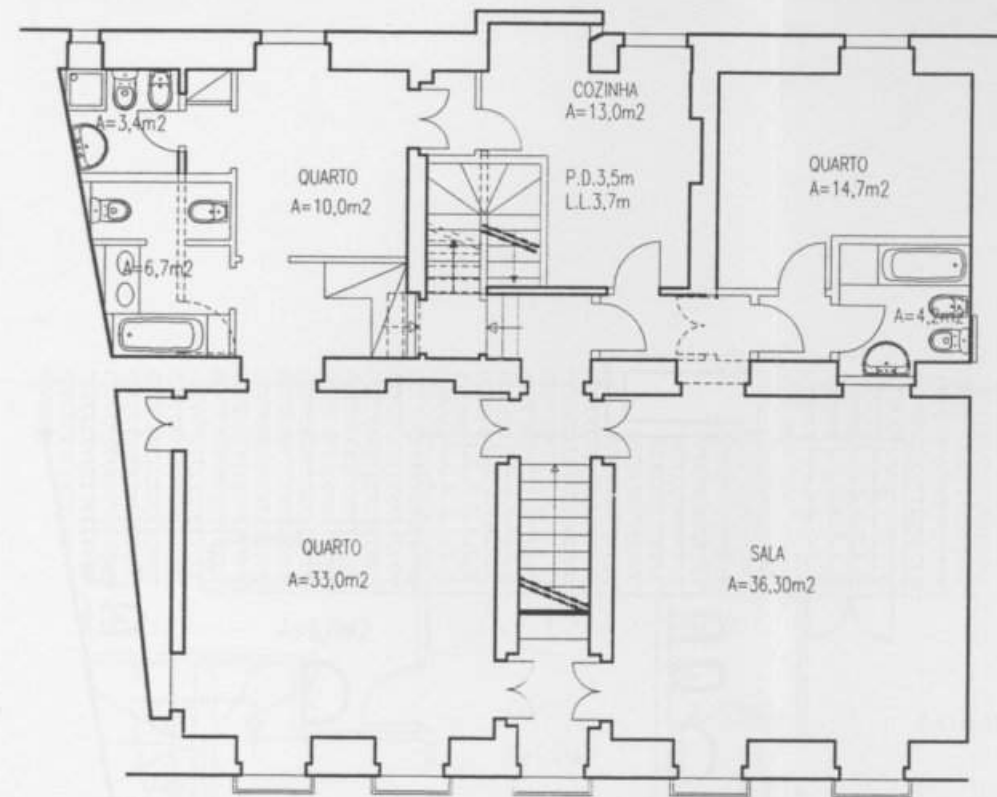


**PROJECTO DE REMODELAÇÃO - EDIFÍCIO DE HABITAÇÃO
RUA DE S. BENTO - LISBOA**

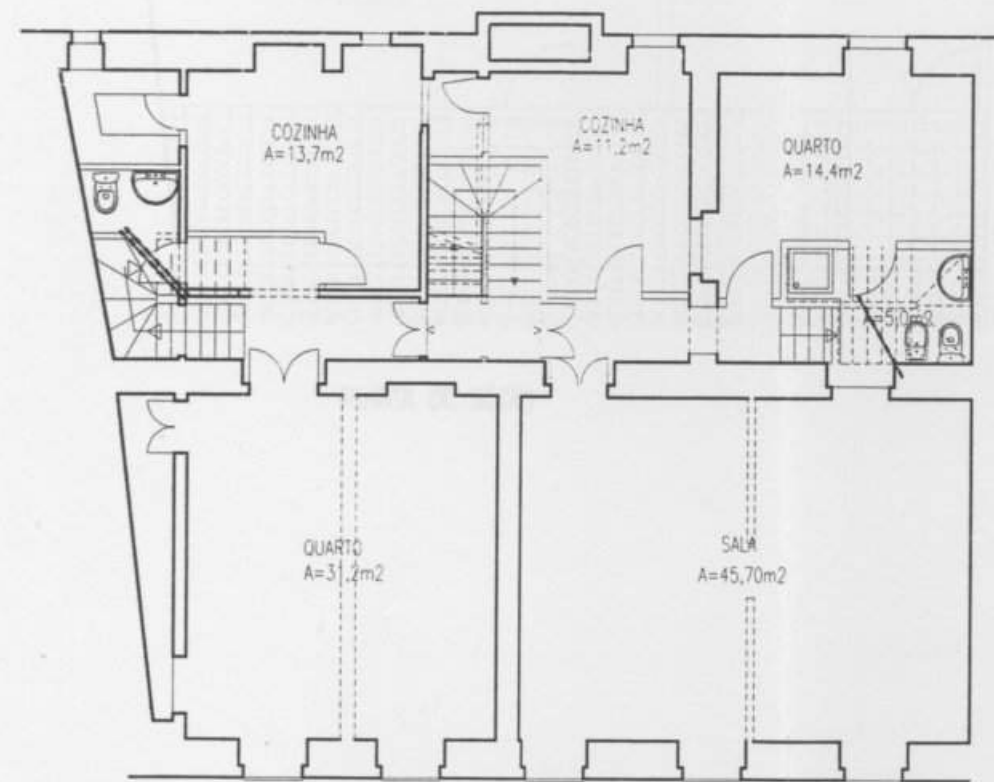
PROJECTO DE REMODELAÇÃO - EDIFÍCIO DE HABITAÇÃO
RUA DE S. BENTO - LISBOA
PLANO EL. TERÇO



PLANTA DO 1º PISO

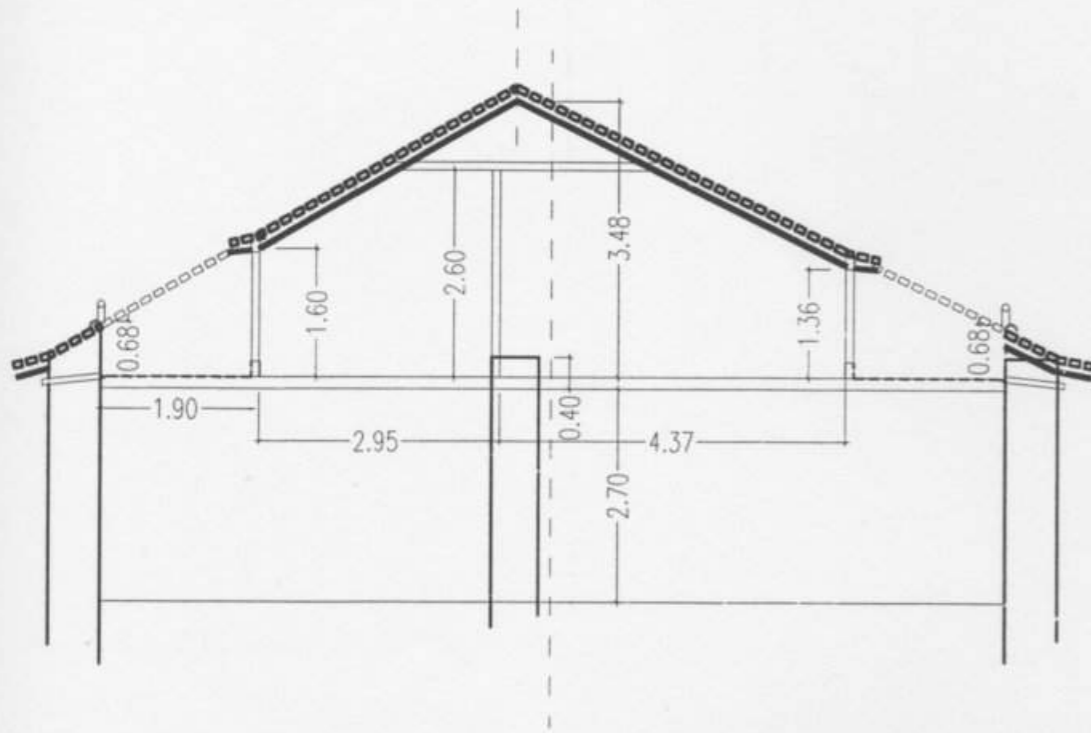


PLANTA DO 2º PISO

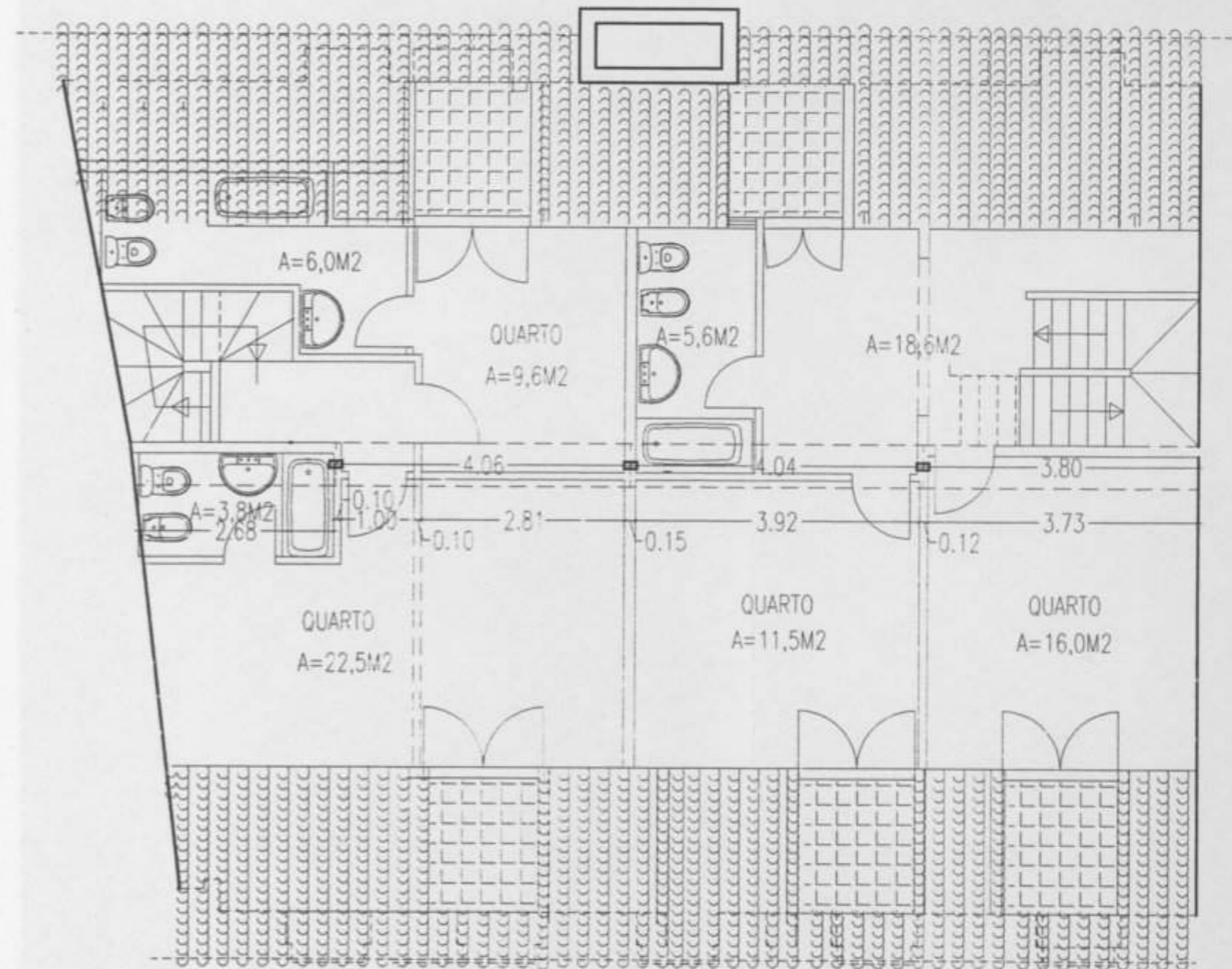


PLANTA DO 3º PISO





CORTE ESQUEMÁTICO DA COBERTURA



PLANTA DO SÓTÃO

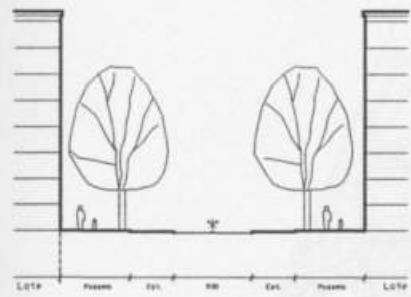
DESENHO LÍQUIDO
PROPOSTA PARA A OP DA INTERVENÇÃO



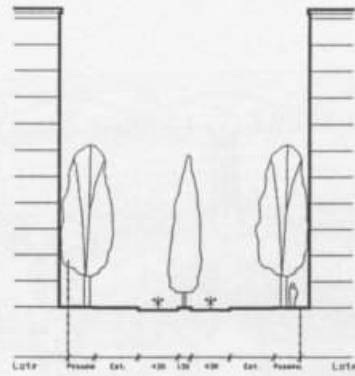
DESENHO URBANO

PROPOSTA PARA A Q^a DA MARQUESA - SINTRA

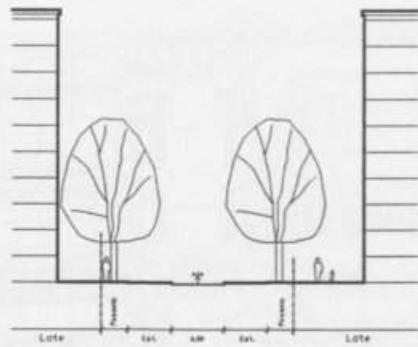




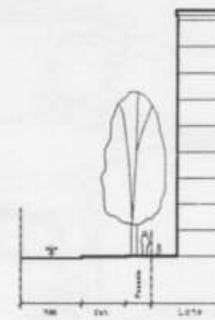
AVENIDA B



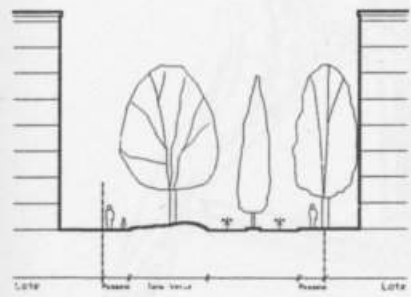
AVENIDA C + F



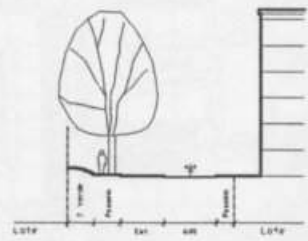
RUA 22



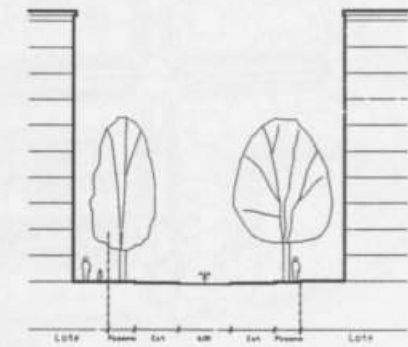
RUA 26 (Lotes 146 e 150)



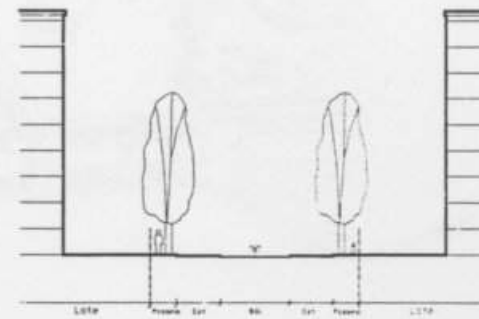
AVENIDA C (lotes 142 e 139)



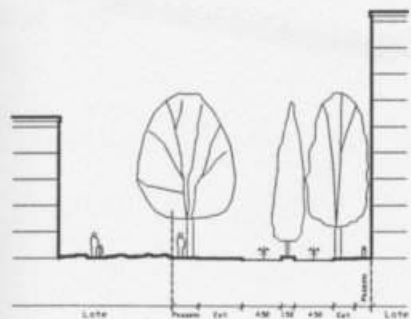
RUA 20



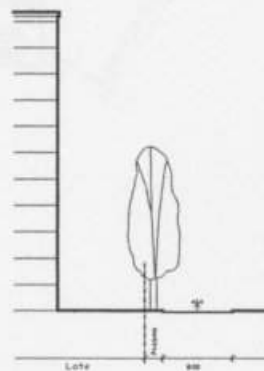
RUA 23



RUA 27



AVENIDA D (lote 52/113 e 3/75)



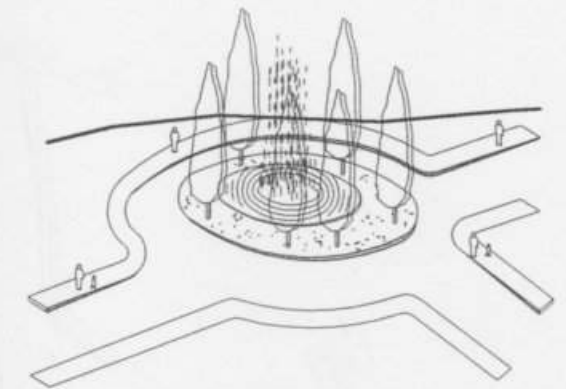
RUA 21



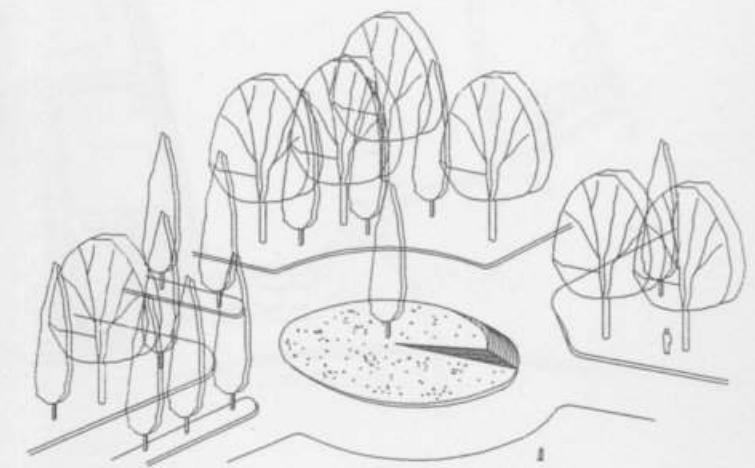
RUA 24



RUA 28 (junto ao estacionamento)

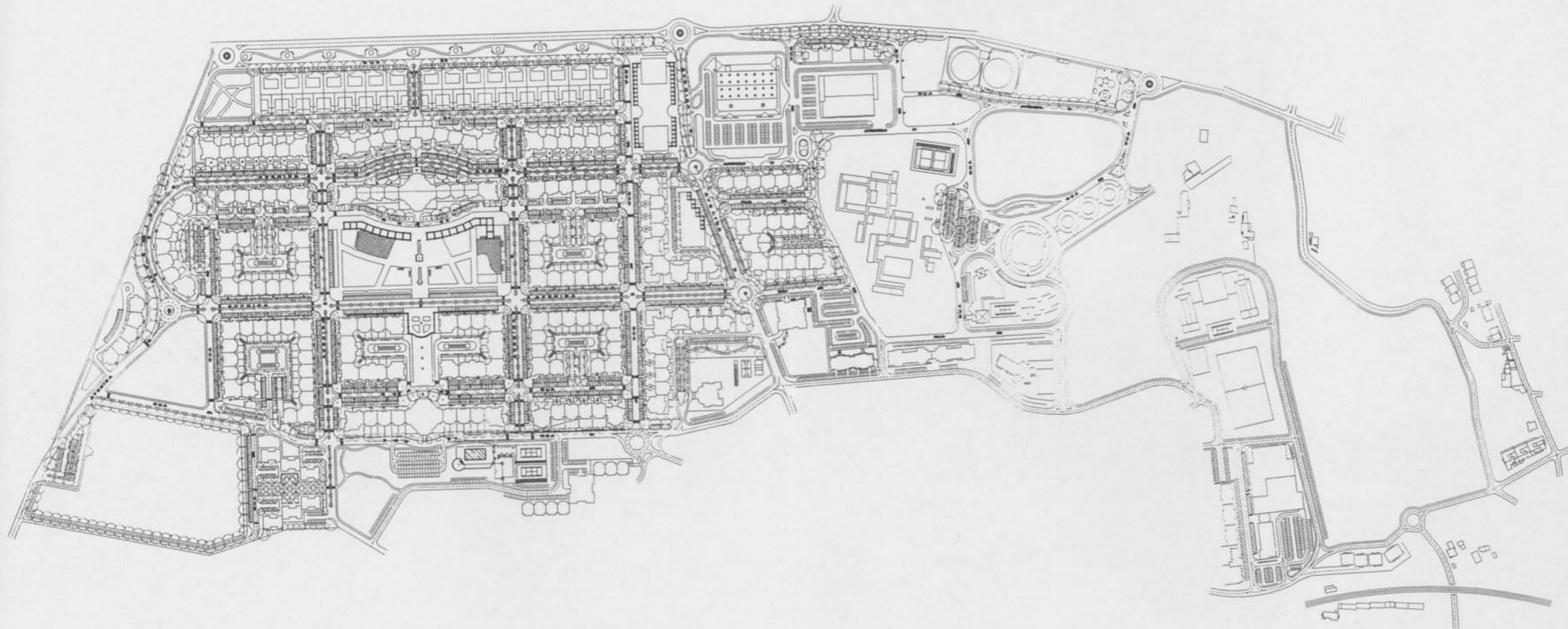


Rotunda (tipo I)



Rotunda (tipo II)





FACULDADE DE ARQUITECTURA
05923
(Centro de Documentação)



SINTRA - Q^o da MARQUESA
PLANO GERAL

Parecer da Tutora de Estágio

O presente parecer refere-se ao trabalho desenvolvido pela estagiária Carla Alexandra Dias Rosado, na Câmara Municipal de Lisboa, no Departamento de Construção de Habitação, na Divisão de Projectos Habitacionais.

O Objectivo do estágio consistia na integração da estagiária na equipa projectista que se encontrava a desenvolver o projecto integrado no P.E.R., designado por Benfica - Buraca Zona F, correspondendo à fase de desenvolvimento de Projecto Base.

A estagiária adquiriu conhecimentos técnicos mínimos, demonstrando capacidade para a sua aplicação. No entanto a sua reduzida assiduidade e conseqüente falta de empenho são visíveis no trabalho desenvolvido.

Lisboa, 8 de Setembro de 1998.

Ana Lúcia Barbosa
Ana Lúcia Barbosa

VISTO

O Chefe da Divisão
de Projectos Habitacionais

Gomes Teixeira

VISTO

A Director do Departamento
de Construção de Habitação

[Signature]

[Faint, illegible text]

[Faint, illegible text running vertically down the page]

[Faint markings or text at the bottom right edge]